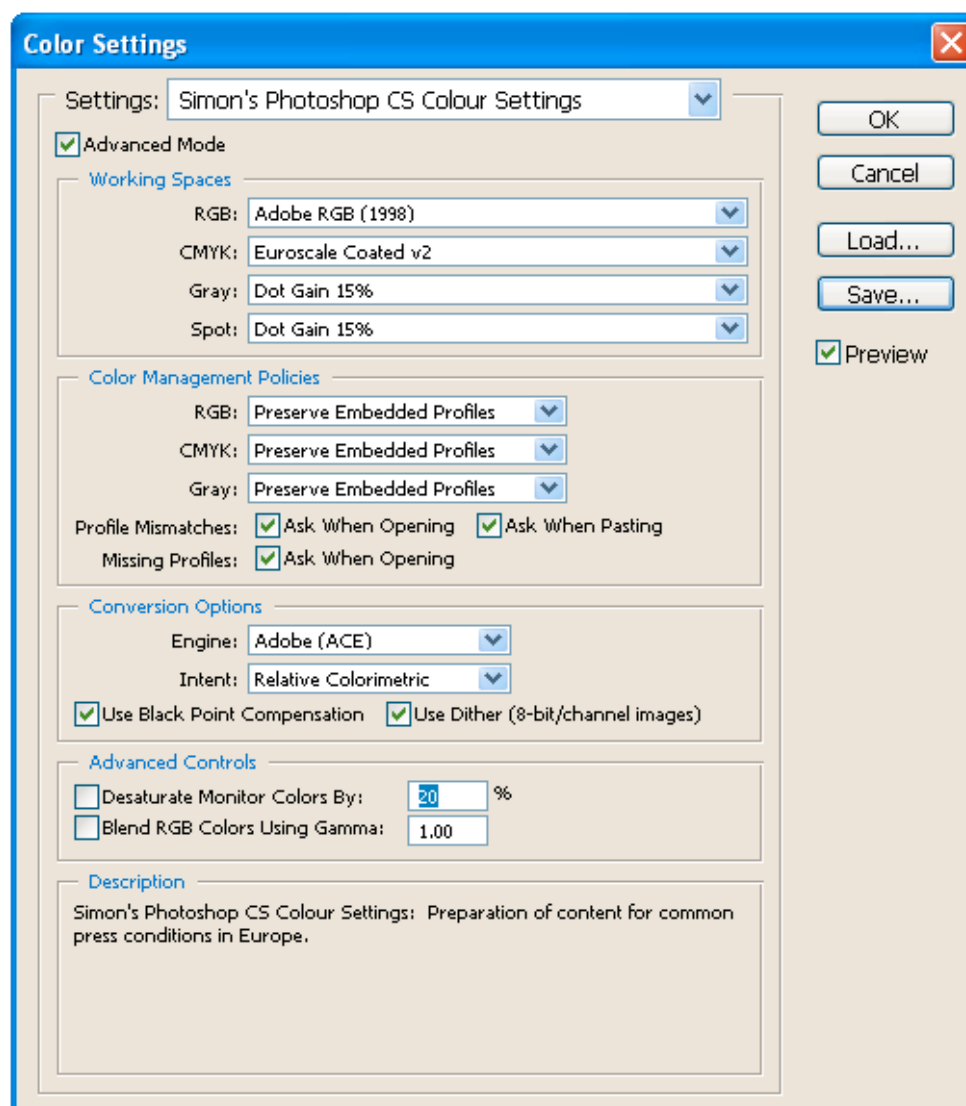


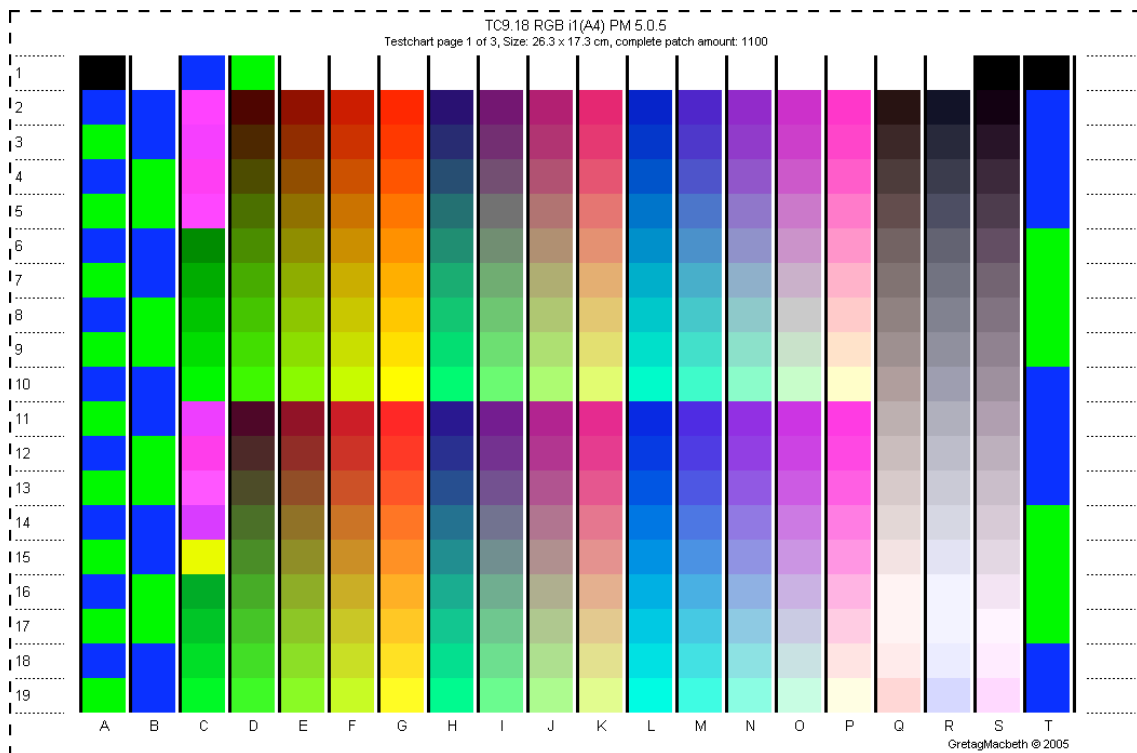
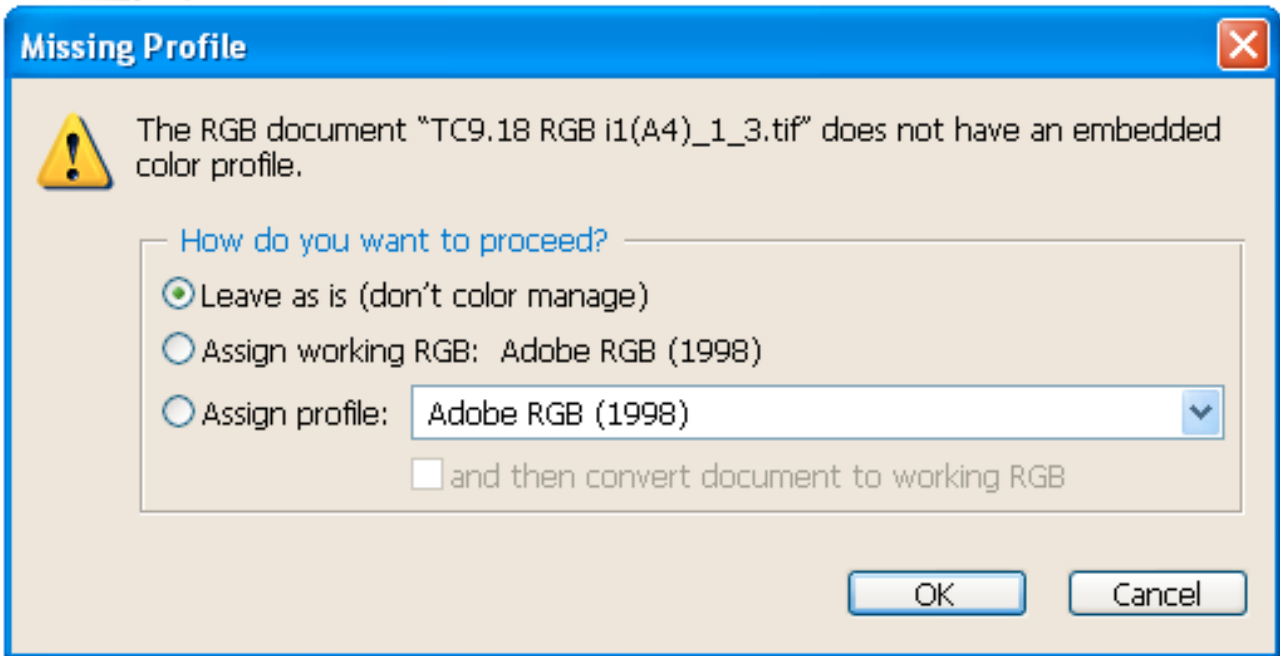
Printing (TC9.18 RGB i1) Test Charts from Photoshop 7, CS or CS2 with Windows XP using the Epson R800 & R1800 Printers.

N.B. We highly recommend using our Enhanced Printer Calibration Service for this printer using Test Charts (TC9.18 RGB i1) Parts 1, 2 and 3 instead of Test Chart (TC2.83 RGB i1)

1. Open Photoshop 7, CS or CS2 and then select Edit/Color Settings.
2. Configure as shown below, then select "Save" and give a suitable name.
3. Click OK.

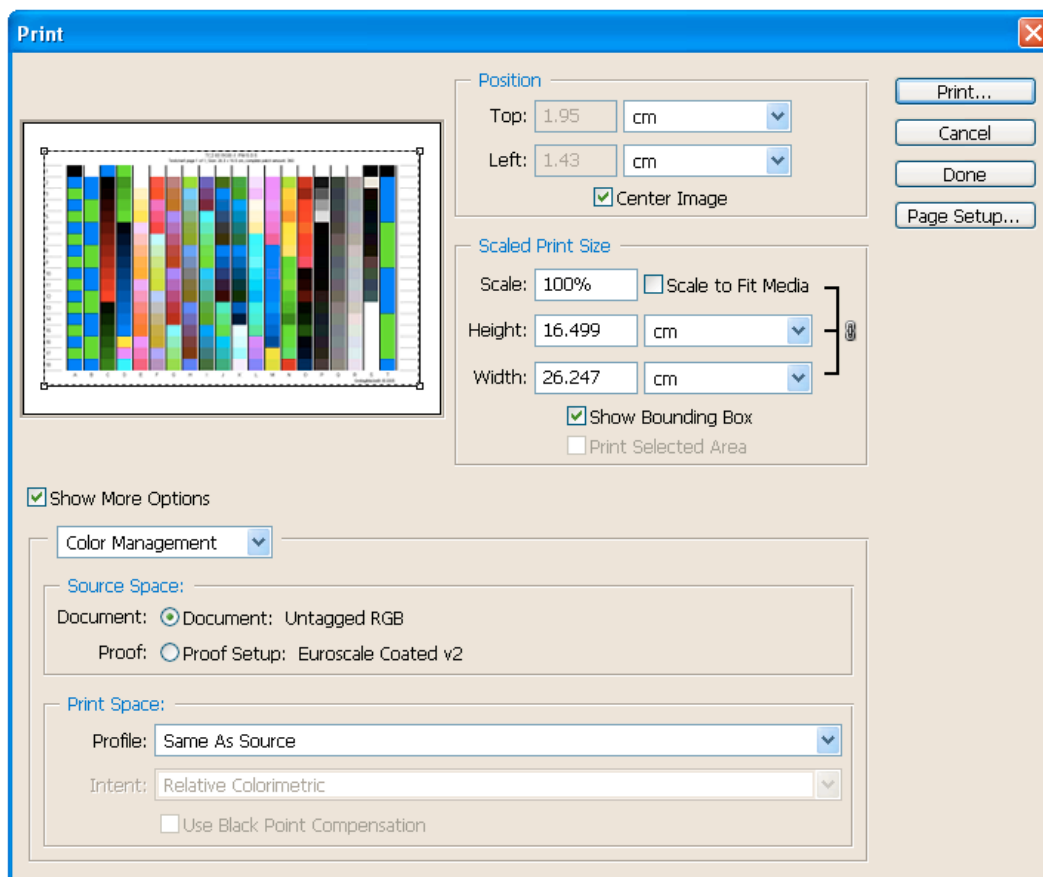


4. Open the (TC9.18 RGB i1) Test Chart 1 of 3 you downloaded from our website.
5. When you see the window below, select **Leave as is (don't color manage)** this is very important.

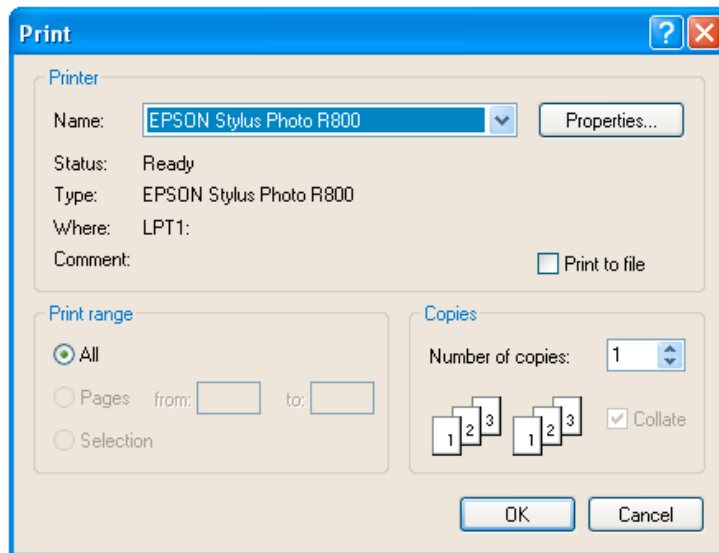


6. Go to File / Print with Preview.

7. Tick “Show More Options“ and then select **Color Management** as opposed to “Output”.
8. Under “Profile” select **Same as Source** (Photoshop 7 or CS) or **No Colour Management** (Photoshop CS2 or CS3)
9. Click “Page Setup” and select “Landscape” and then click OK.



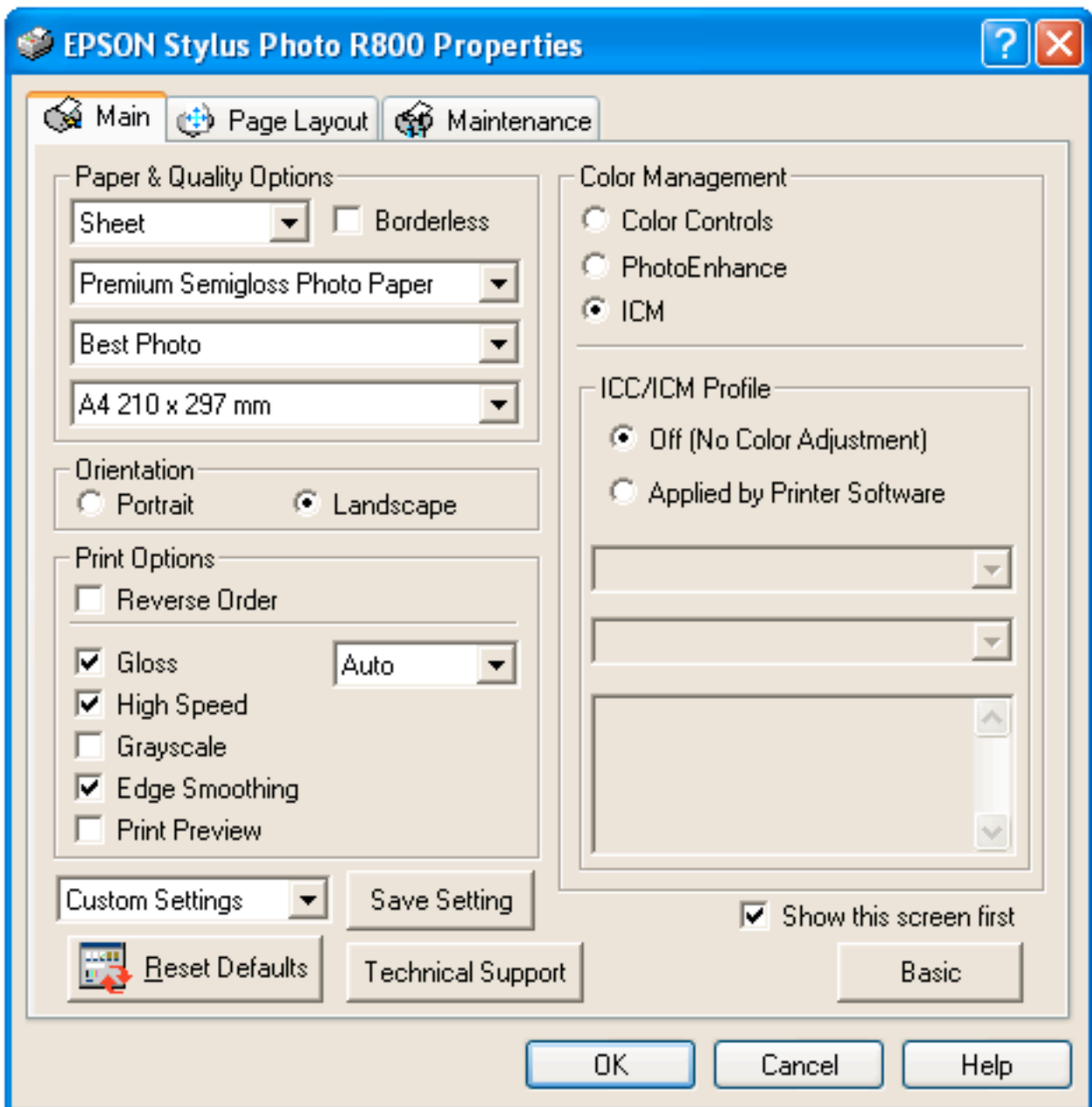
10. Click Print.



11. Select your printer from the pull down menu and then Click Properties.



12. Click the “Advanced” Button



13. Click **ICM** and then Tick **No Colour Adjustment**.

14. Tick “Show this screen first” (First Time Only)

15. Set the Media using the following guide: -
 - **Glossy Paper** – Use Premium Glossy Photo Paper (Tick Gloss)
 - **Semigloss Paper** – Use Premium Semigloss Paper (You may Tick Gloss)
 - **Matt Paper (White)** – Use Archival Matte Paper
 - **Matt Paper (Heavy)** – Use Matte Paper Heavyweight
16. Click OK and OK again to print your Test Chart.
17. Repeat sections 4 to 16 for Test Charts 2 & 3
18. Leave the print(s) to dry for at least 12 hours before posting.
19. Please let us know what media setting you used so we can give you accurate Printing Instructions.
20. Please post the Test Charts in a suitable envelop to the following address together with a cheque made payable to **Simon Clifford-Smith**

SCS IMAGING 37 Osborne Mews, Sheffield, South Yorkshire, S11 9EG