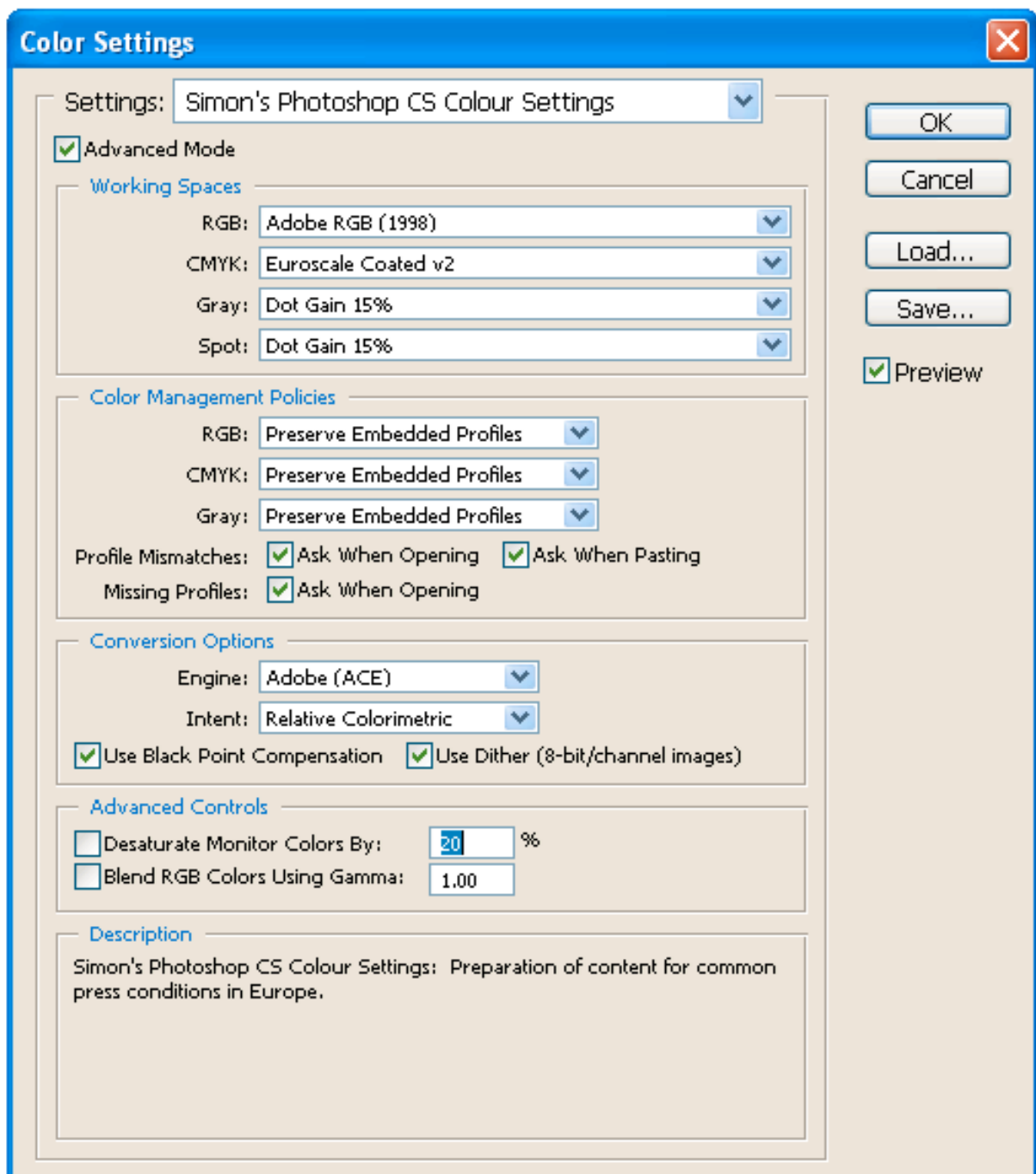
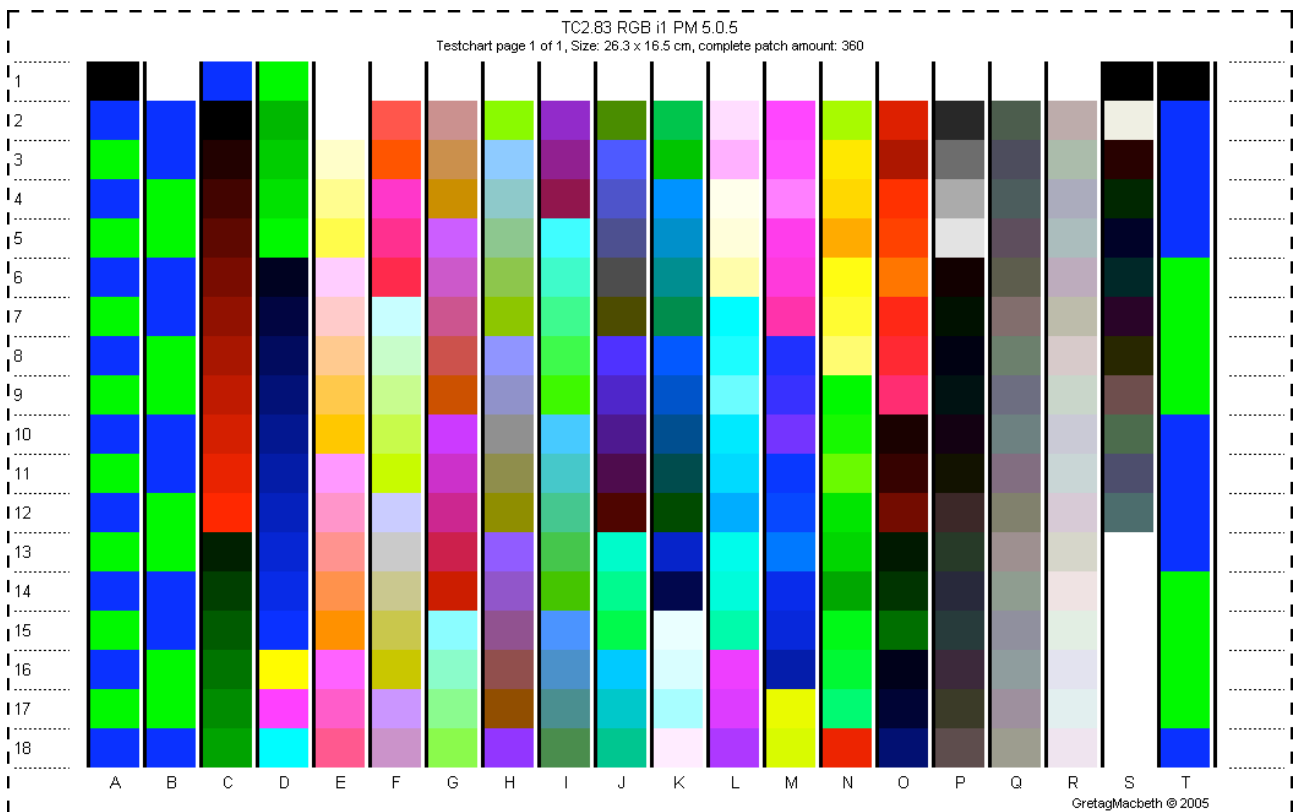
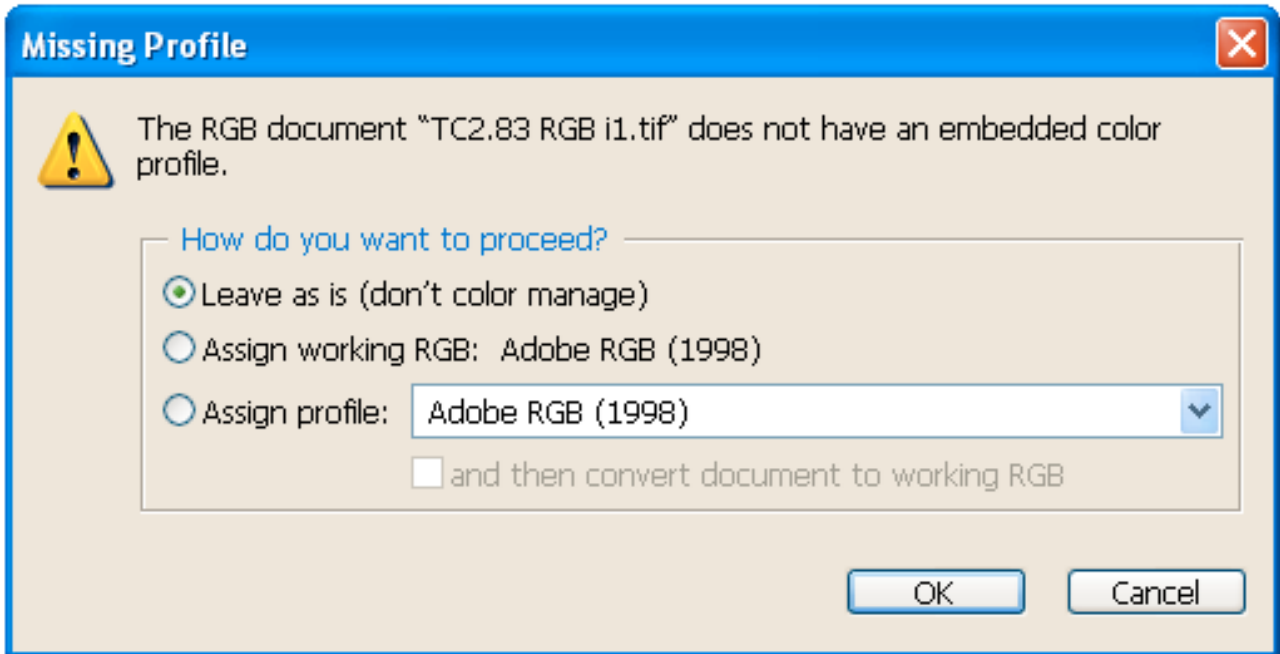


Printing (TC2.83 RGB i1) Test Charts from Photoshop 7, CS or CS2 with Windows XP using Canon PIXMA Printers.

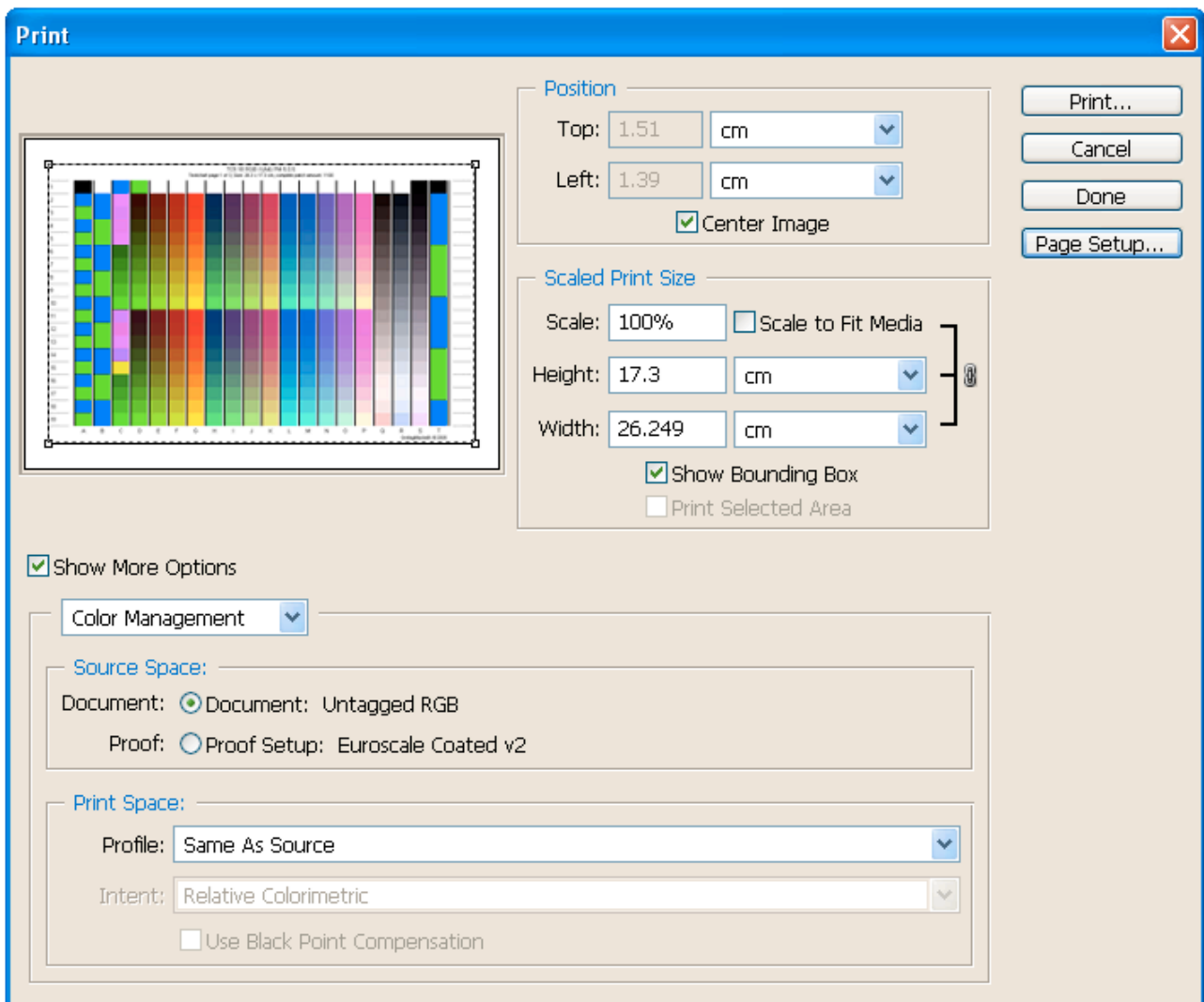
1. Open Photoshop 7, CS or CS2 and then select Edit/Color Settings.
2. Configure as shown below, then select "Save" and give a suitable name.
3. Click OK.



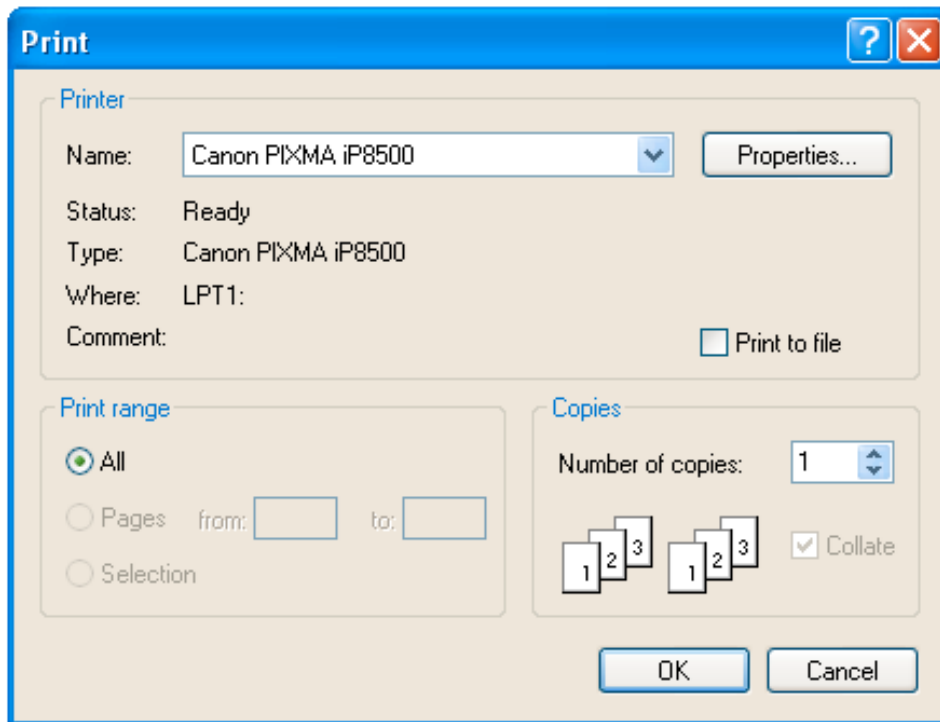
4. Open the(TC2.83 RGB i1) Test Chart you downloaded from our website.
5. When you see the window below, select **“Leave as is (don’t color manage)”** this is very important.



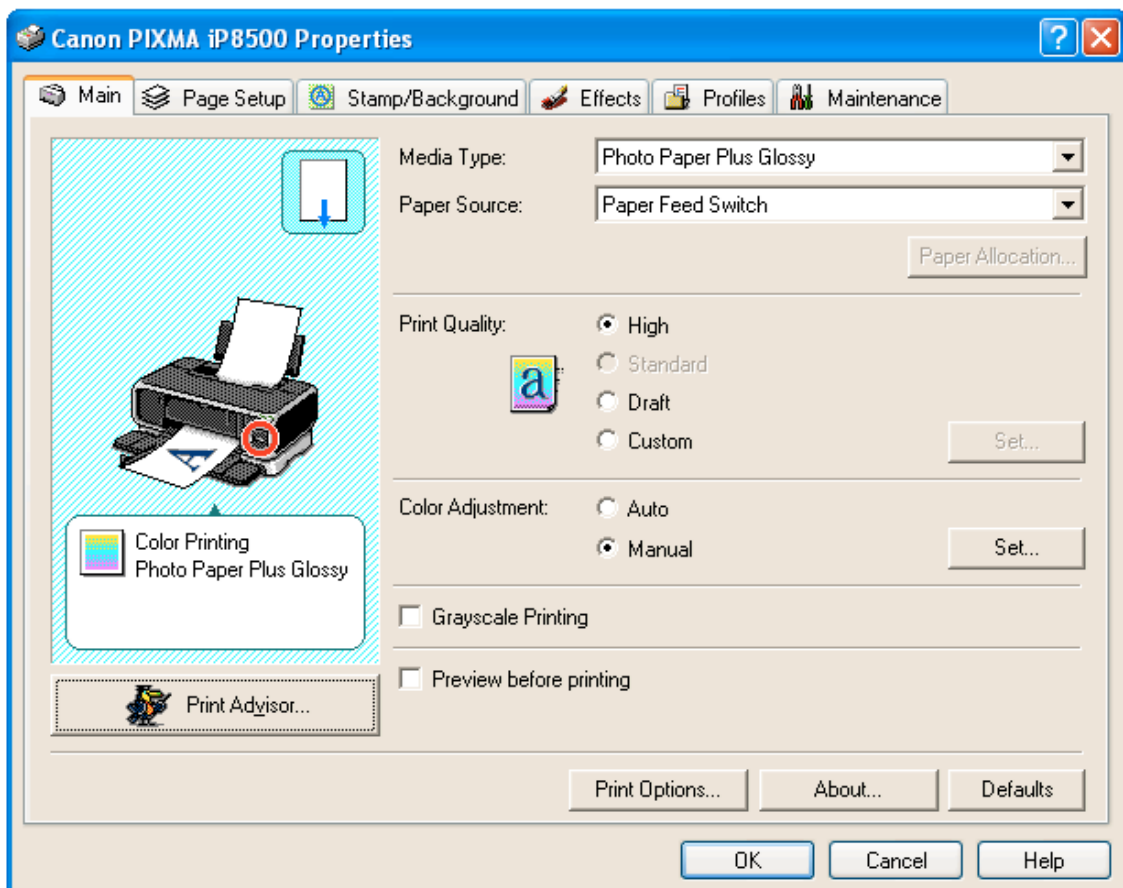
6. Go to File / Print with Preview.
7. Tick “Show More Options“ (Photoshop 7 or CS) or “More Options” (Photoshop CS2) and then select “Color Management” as opposed to “Output”.
8. Under “Profile” select **Same as Source** (Photoshop 7 or CS) or set Colour Handling to **No Colour Management** (Photoshop CS2)



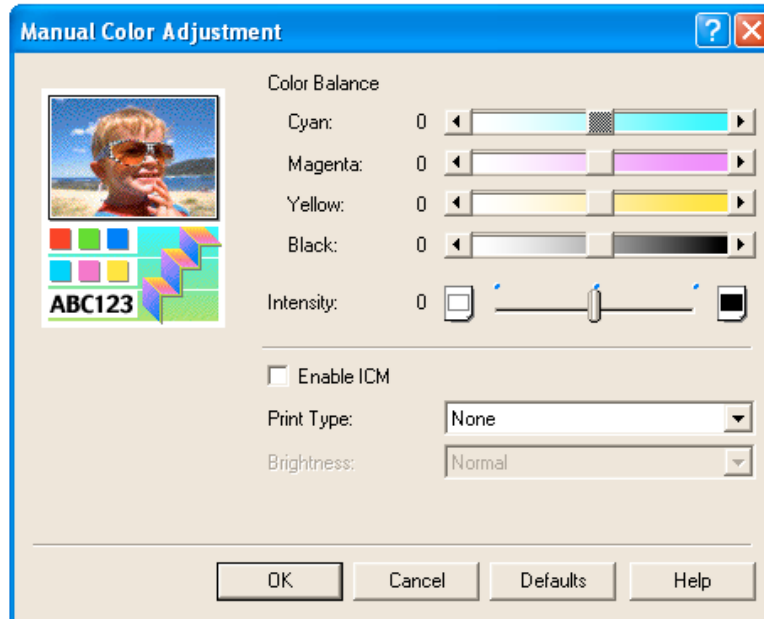
9. Click “Page Setup” and select “Landscape” and then click OK.
10. Click Print.



11. Select your printer from the pull down menu and then Click Properties.



12. Set the "Media" to Photo Paper Plus Glossy, regardless of your paper.
13. Set "Colour Adjustment" to **Manual** and then click the **Set** button.



14. Set the "Print Type" to "None" and then click OK.

N.B. If you only use your Canon Printer for printing photographs etc, you can make the above settings your "Default" settings if you go to "Control Panel", select Printers & Faxes and then "Right Click" on your printer icon and then select "Printing Preferences". Then configure your printer as indicated above. Line 12 to 14 inclusive.

18. Click OK to print your Test Chart.
19. Leave the print(s) to dry for at least 4 hours before posting. Please enclose a Cheque made payable to **Simon Clifford-Smith** and post in an envelop suitable for photographs to: -

SCS-Imaging, 37 Osborne Mews, Sheffield, South Yorkshire, S11 9EG