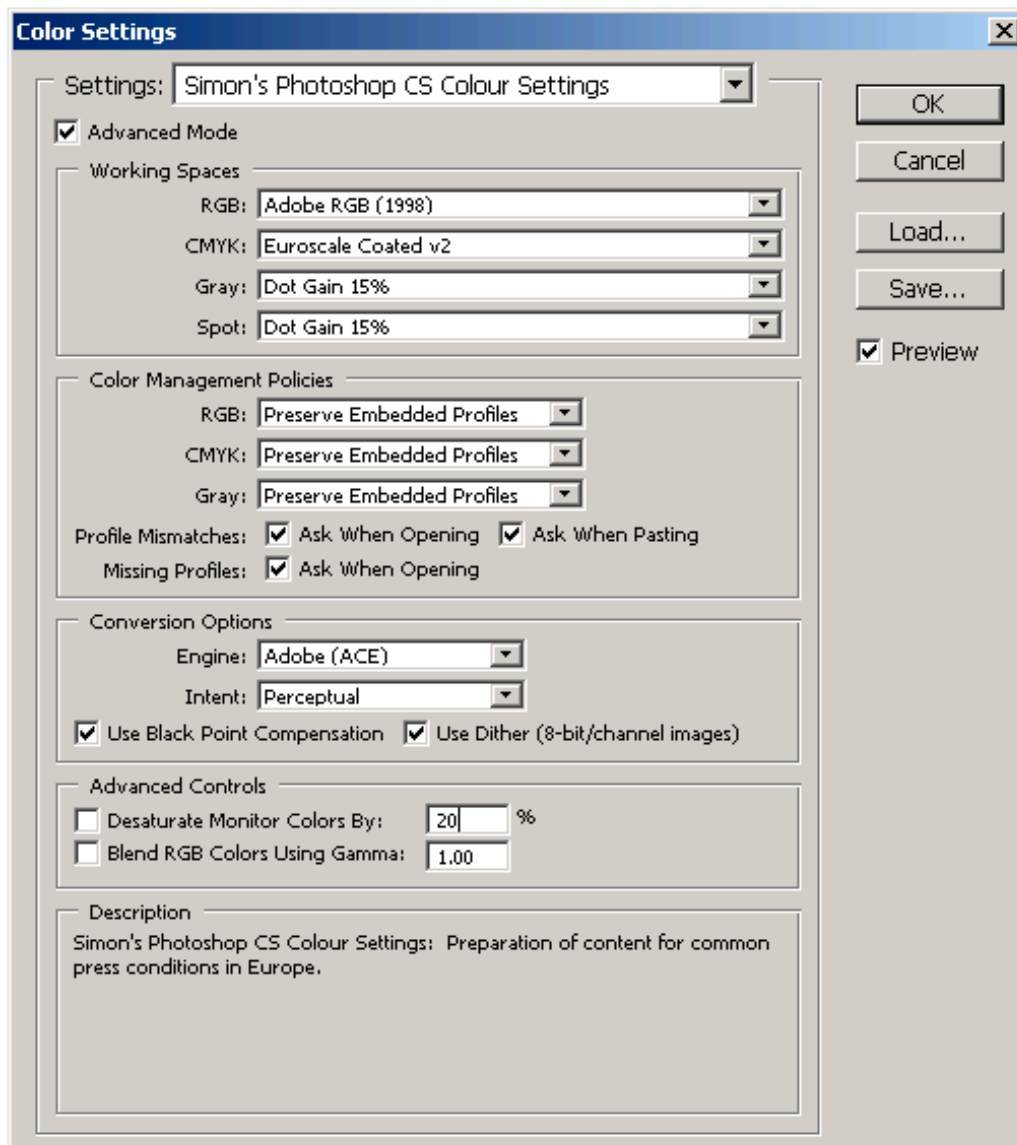


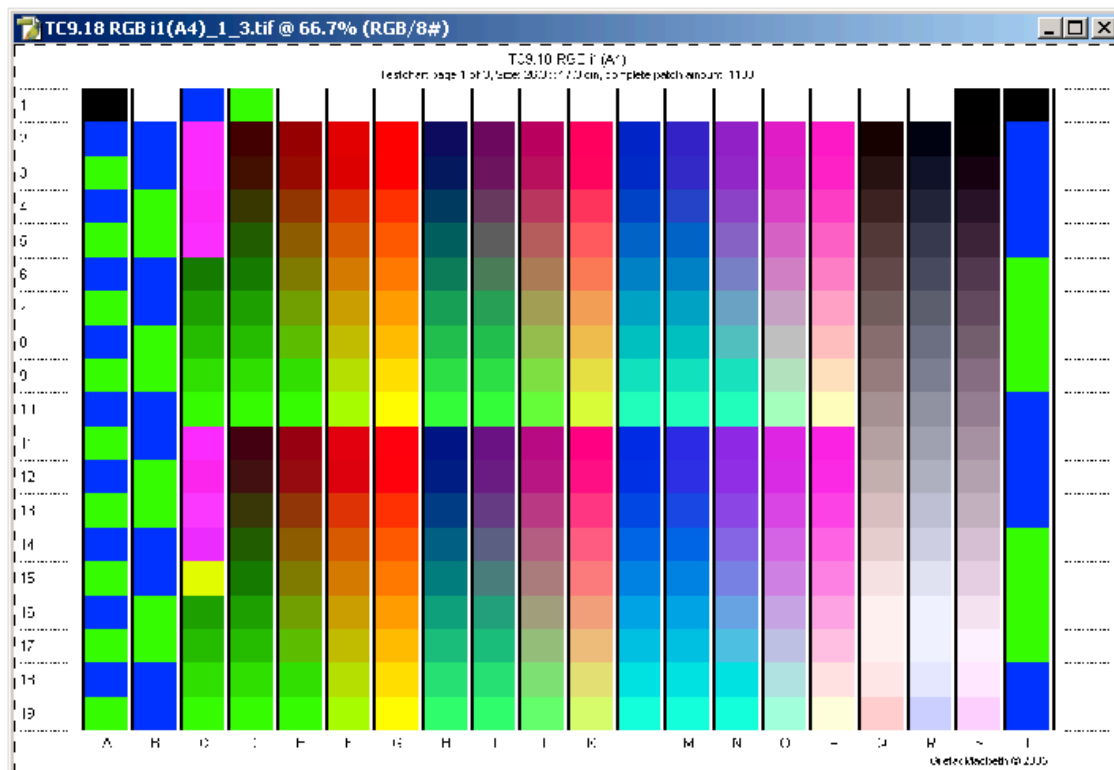
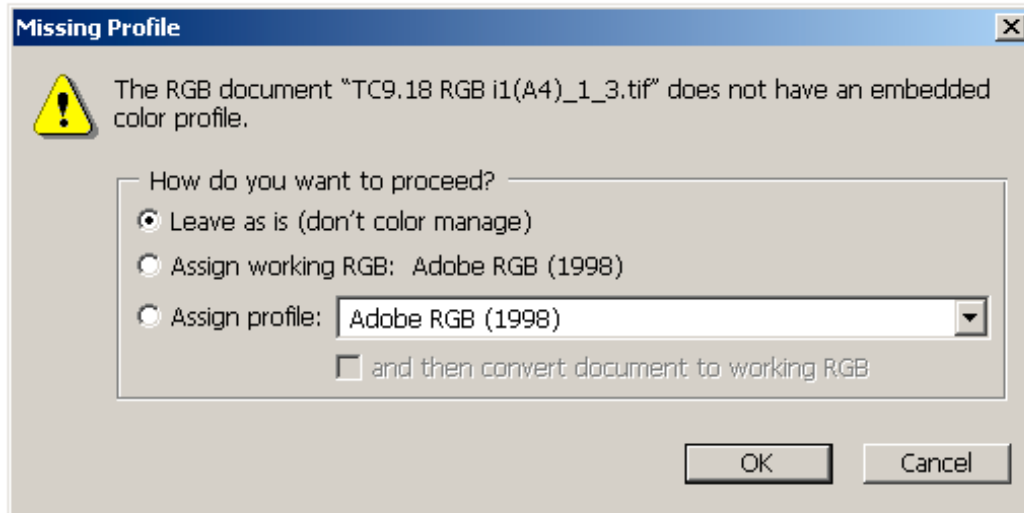
Printing (TC9.18 RGB i1) Test Charts from Photoshop 7, CS or CS2 with PC's using the Epson R2400 Printer.

In order to obtain the best performance from Epson's K3 Inks, we highly recommend using our Enhanced Printer Calibration Service for this printer using Test Charts i1 TC 9.18 RGB Part's 1, 2 & 3 instead of Test Chart (TC2.83 RGB i1)

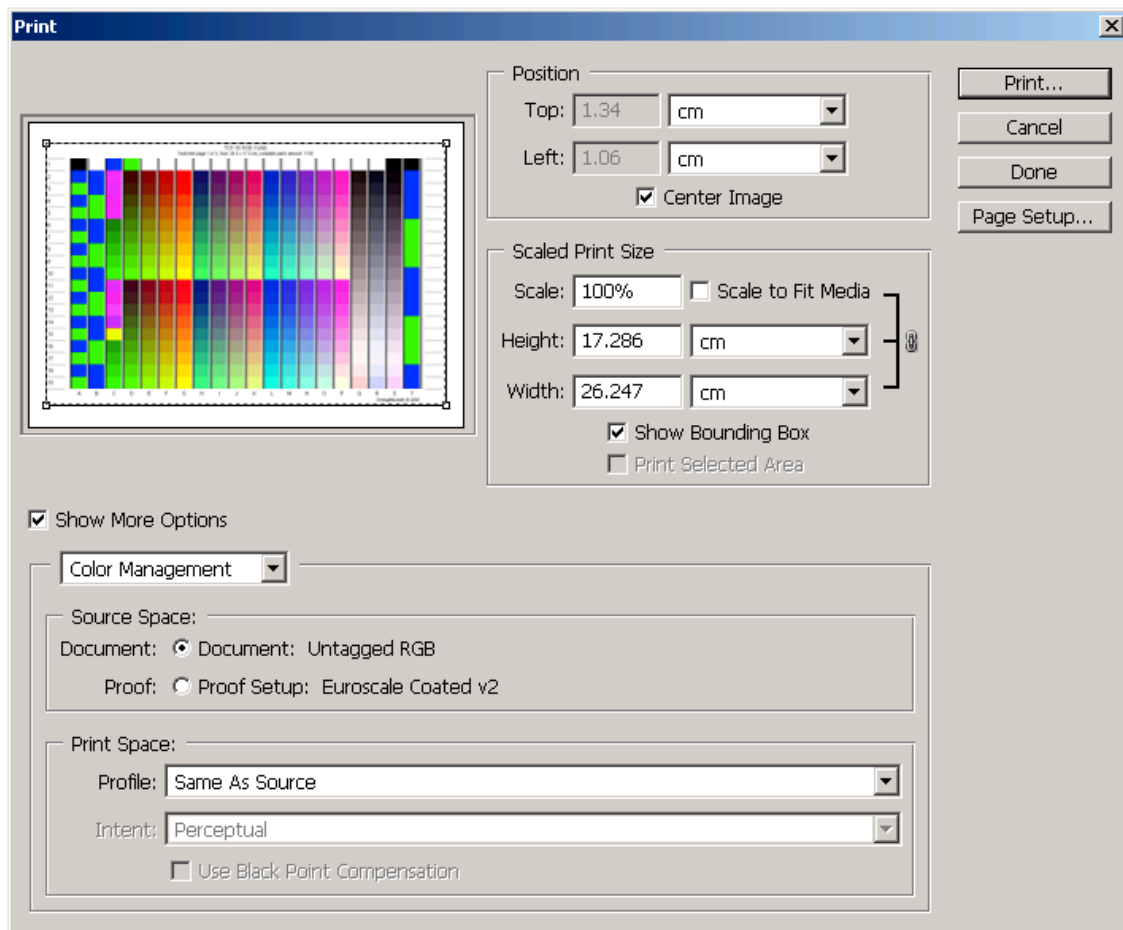
1. Open Photoshop 7, CS or CS2 and then select Edit / Colour Settings.
2. Configure as shown below, then select "Save" and give a suitable name.
3. Click OK.



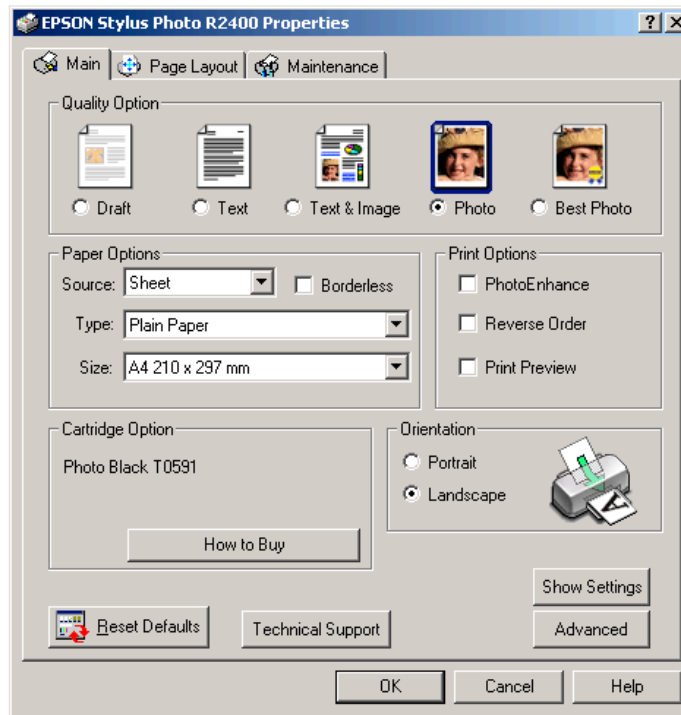
4. N.B. There is no problem using sRGB instead of Adobe RGB (1998) if you prefer, the really important issue here is that you preserve embedded profiles and you also have “missing profiles” ticked.
5. Open the (TC9.18 RGB i1) Test Chart 1 of 3 you downloaded from our web-site.
6. When you see the window below, select **“Leave as is (don’t colour manage)”** this is very important.



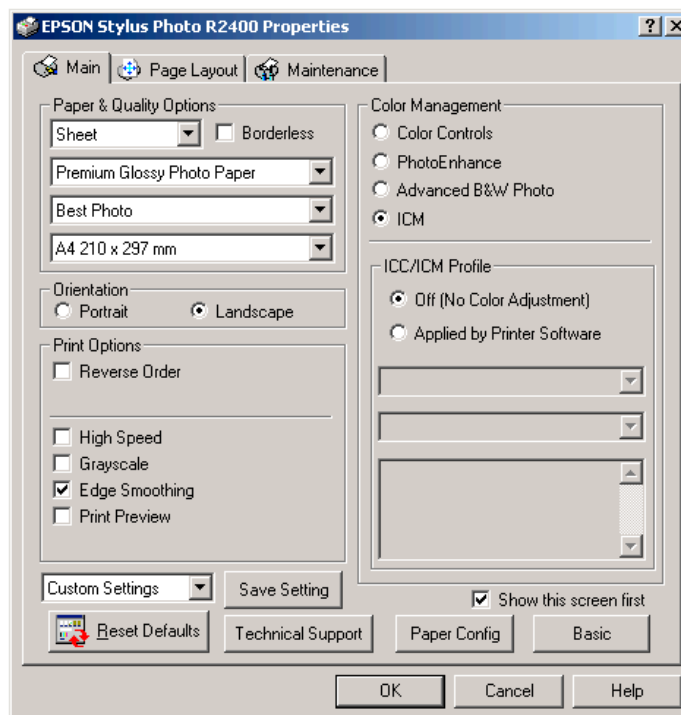
7. Go to File / Print with Preview.
8. Tick “Show More Options“ (Photoshop 7 or CS) or “**More Options**” (Photoshop CS2)
9. Tick “**Colour Management**” as opposed to “Output”.
10. Under “Profile” select “**Same as Source**”(Photoshop 7 & CS) or set “Colour Handling” to “**No Colour Management**” (Photoshop CS2)



11. Click “Page Setup” and select “Landscape” and then click OK.
12. Click Print.
13. Select your printer (if necessary) from the pull down menu and then Click Properties.



14. Click the “Advanced” Button, and then Tick “Show this screen first” (First Time Only)



15. Click “ICM” and then Tick “No Colour Adjustment” and Turn “High Speed” Off.

16. Set the Media to the one that best describes the paper you want profiling and please write your choice on the edge of the prints so we can give you accurate printing instructions.
17. Finally Click OK and then OK again to Print.
18. Repeat section 5 to 16 above for Test Chart 2 of 3 and Test Chart 3 of 3.
19. Leave the print(s) to dry for at least 4 hours before posting.
20. Please post in an envelop suitable for photographs and enclose a cheque made out to: -
“Simon Clifford-Smith”
21. Please make sure we have your e-mail address, as we will send you your profile, Printing Instructions and Receipt via e-mail.

SCS-IMAGING, 31/274 Fulwood Road, Sheffield, South Yorkshire, S10 3BN