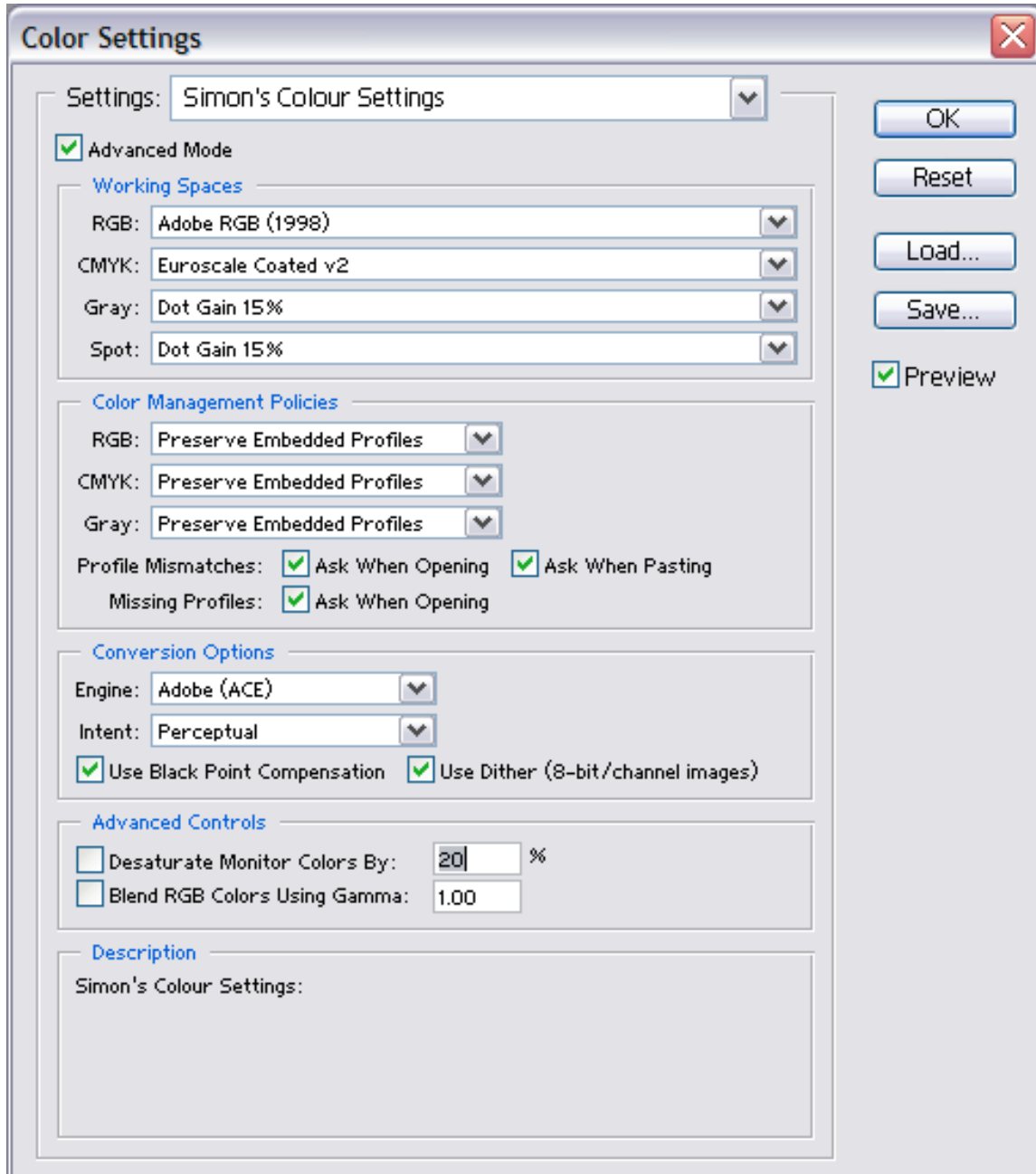


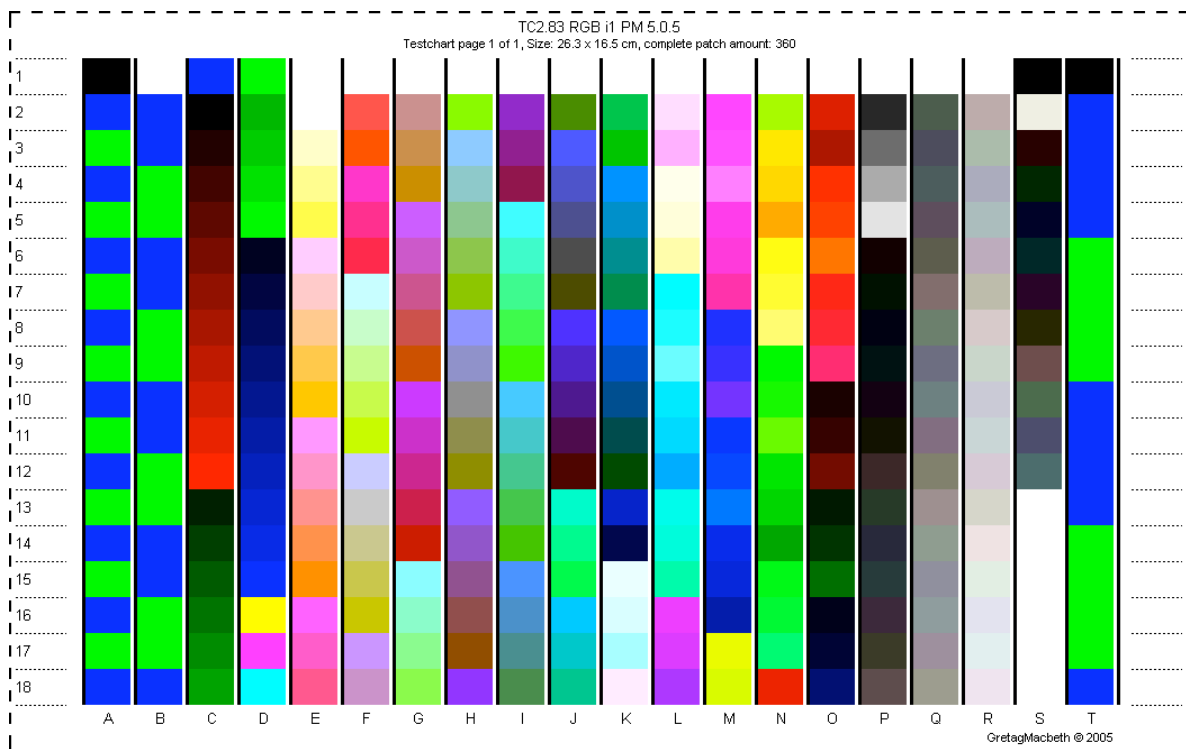
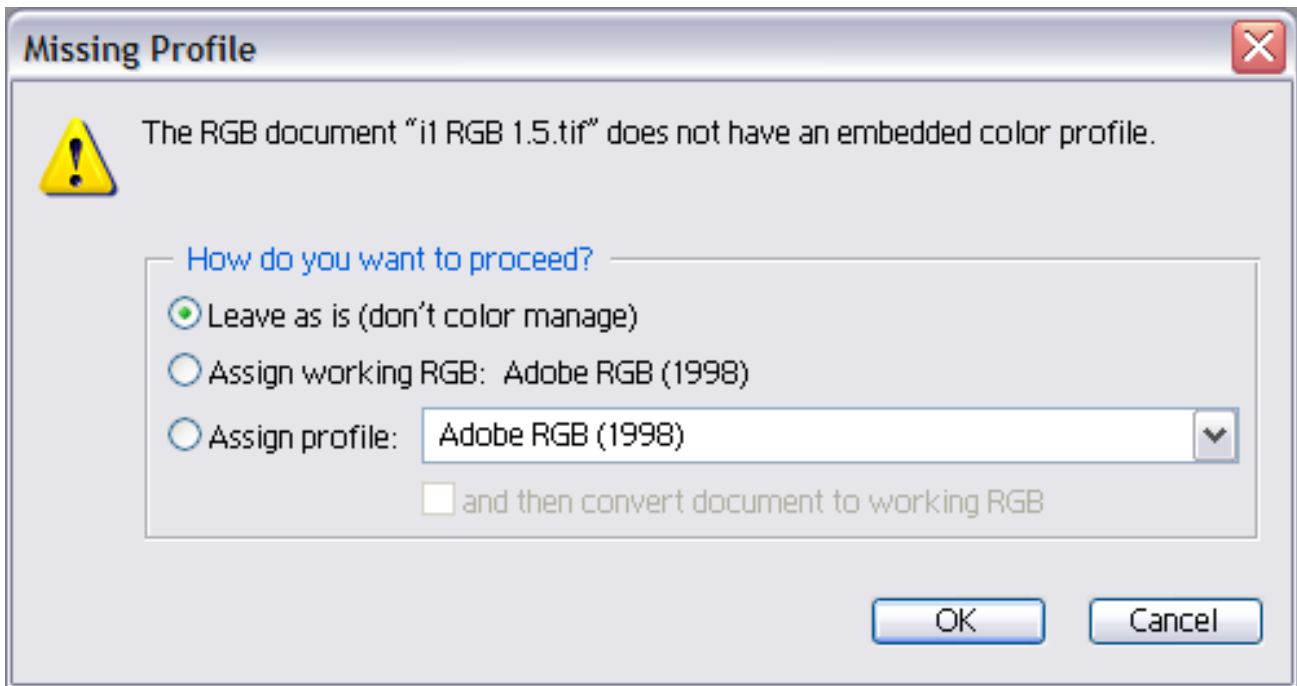
## Printing (TC2.83 RGB i1) Test Charts from Photoshop 7, CS or CS2 with PC's using the Epson 2100 Printer with Photo Black Ink.

1. Open Photoshop 7, CS or CS2 and then select Edit/Color Settings.
2. Configure as shown below, then select "Save" and give a suitable name.
3. Click OK.



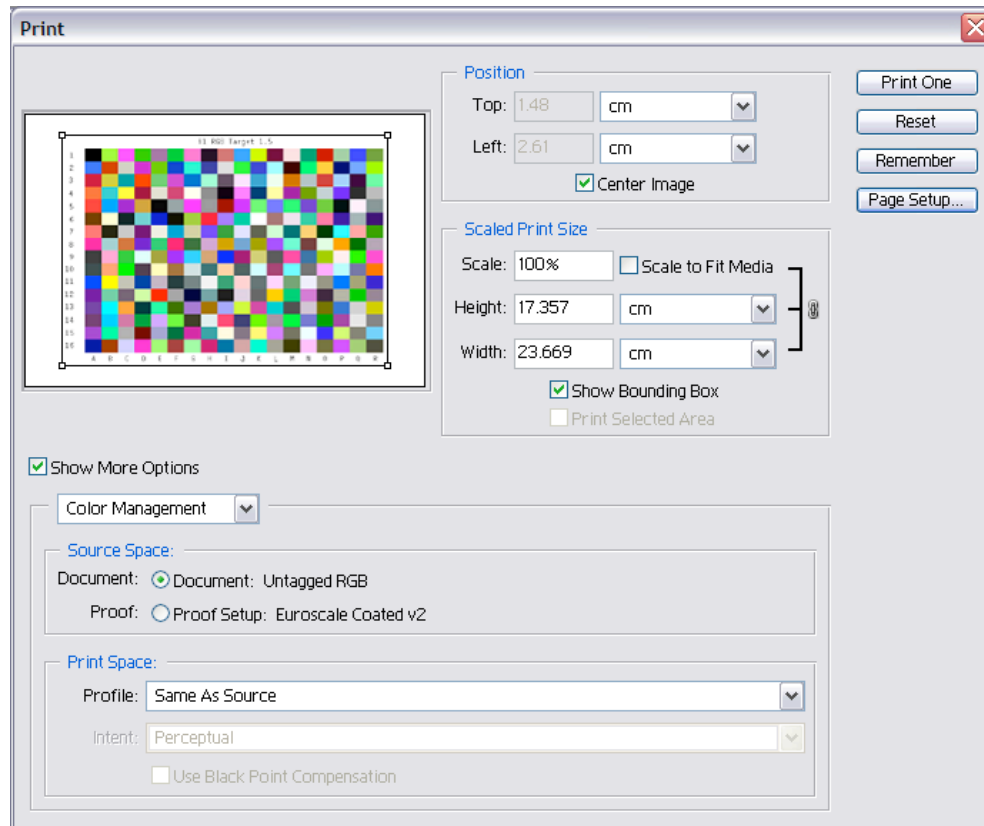
4. Open the (TC2.83 RGB i1) Test Chart you downloaded from our website.

- When you see the window below, select **“Leave as is (don’t color manage)”** this is very important.

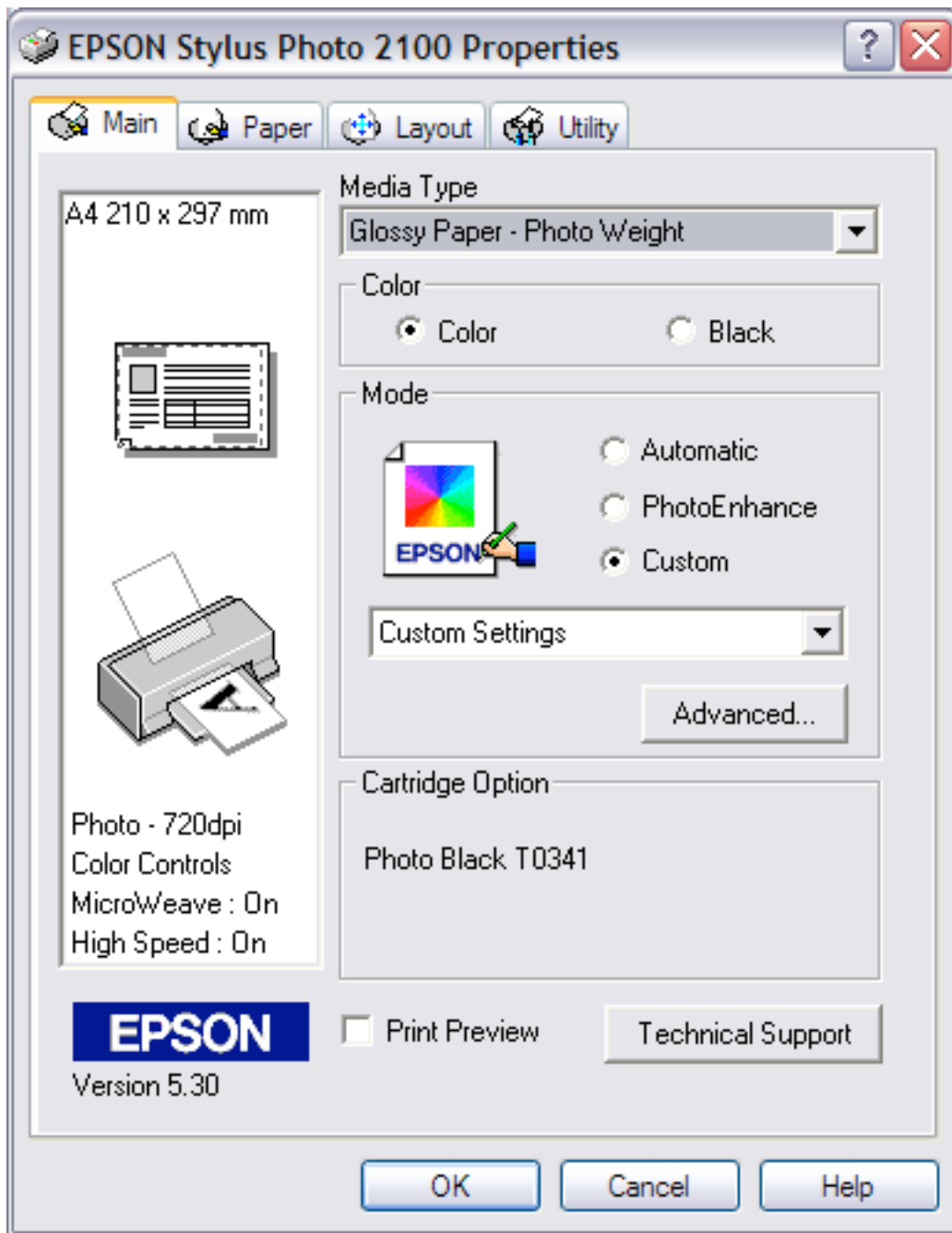


- Go to File / Print with Preview.

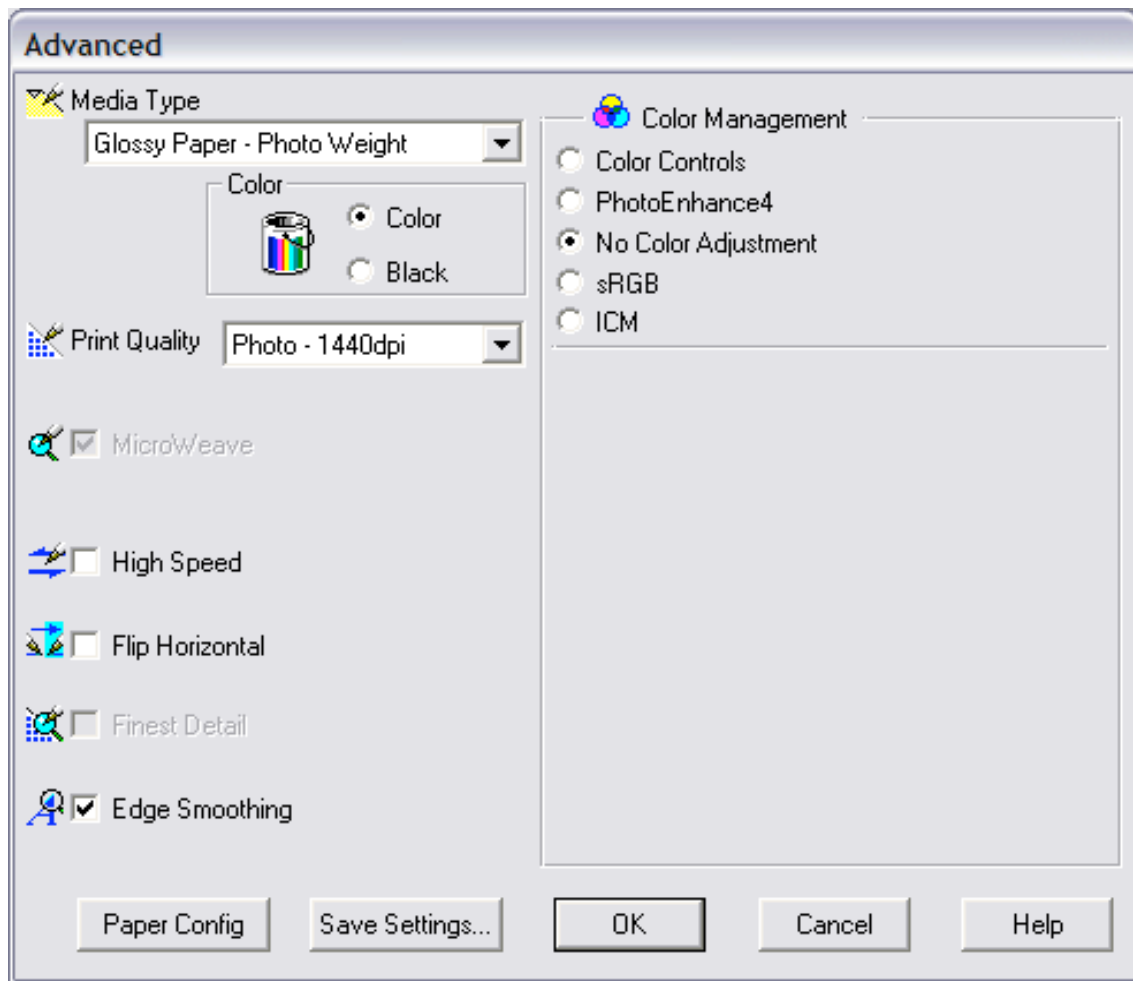
7. Tick **“Show More Options”** (Photoshop 7 or CS) or **“More Options”** (Photoshop CS2)
8. Select **“Color Management”** as opposed to **“Output”**.
9. Under **“Profile”** select **“Same as Source”** (Photoshop 7 or CS) or set **“Colour Handling”** to **“No Colour Management”** (Photoshop CS2)



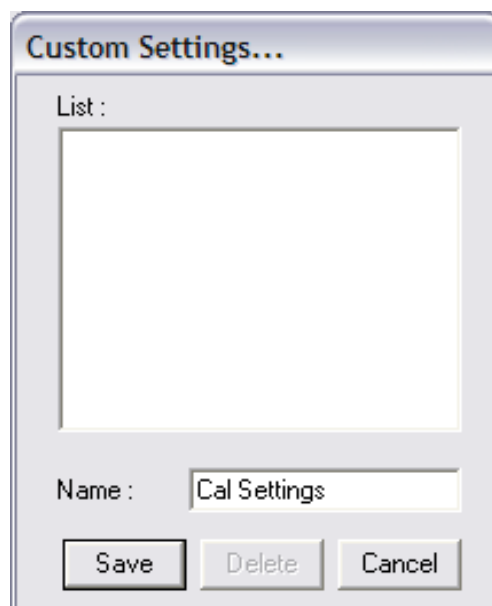
10. If required, Click **“Page Setup”** and select **“Landscape”** and then click OK.
11. Click **Print**.
12. Select your printer from the pull down menu and then Click **Properties**.
13. Set the **“Media”** to **“Glossy Paper – Photo Weight”**, regardless of your paper.
14. Click **“Custom”**

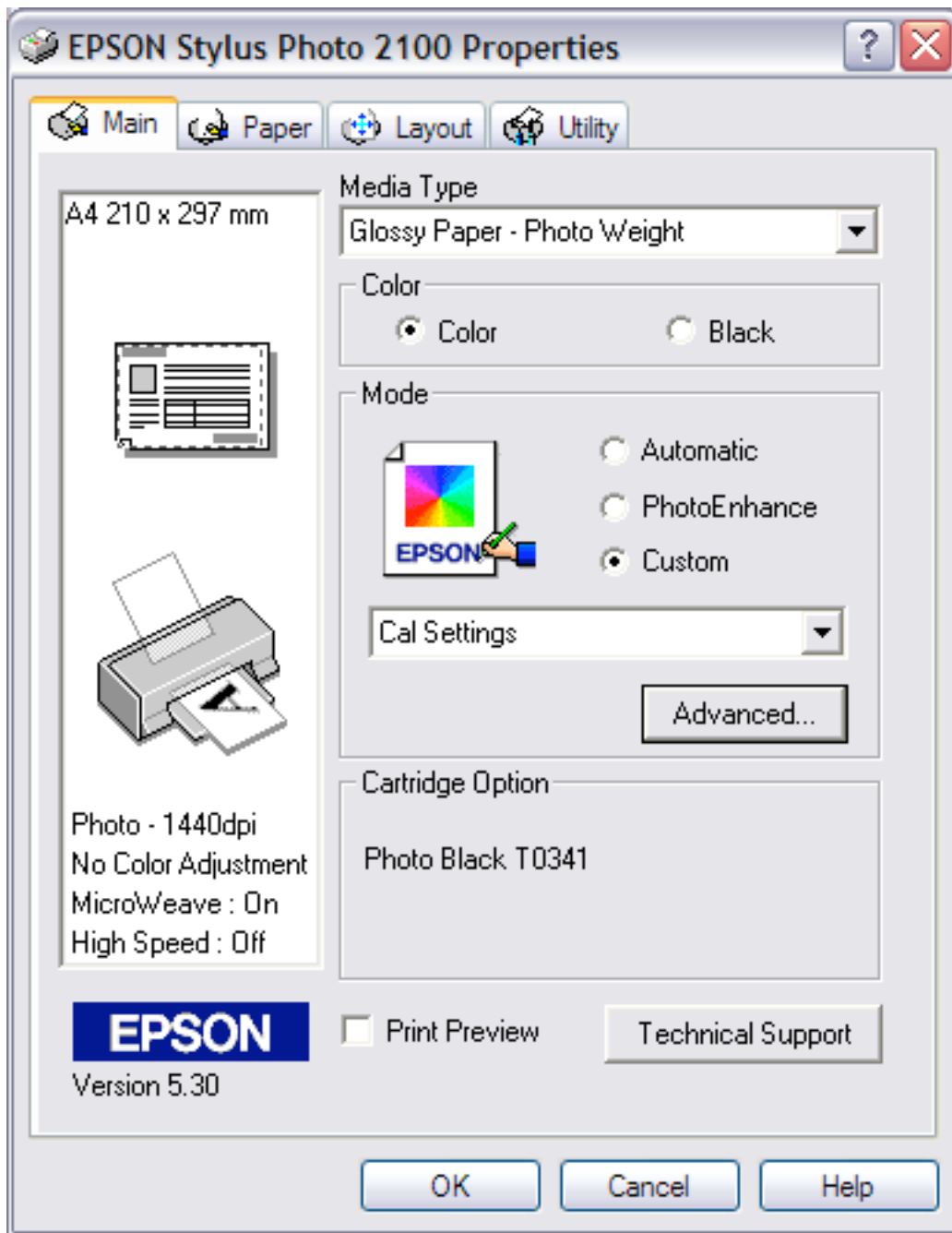


15. Click the “Advanced” button.
16. Set the “Print Quality” to “**Photo – 1440 dpi**”
17. Set “Color Management” to “**No Color Adjustment**”
18. Turn “High Speed” off.



19. Select “Save Settings” and type “**Cal Settings**” and then click Save.





20. Click OK to print your Test Chart.
21. Leave the print(s) to dry for at least 4 hours before posting to :-  
SCS-Imaging, 31/274 Fulwood Road, Sheffield, South Yorkshire S10 3BN  
Together with a Cheque made payable to: “**Simon Clifford-Smith**”
22. Please let us have your e-mail address as we send your Profile, Printing Instructions and Receipt by e-mail.