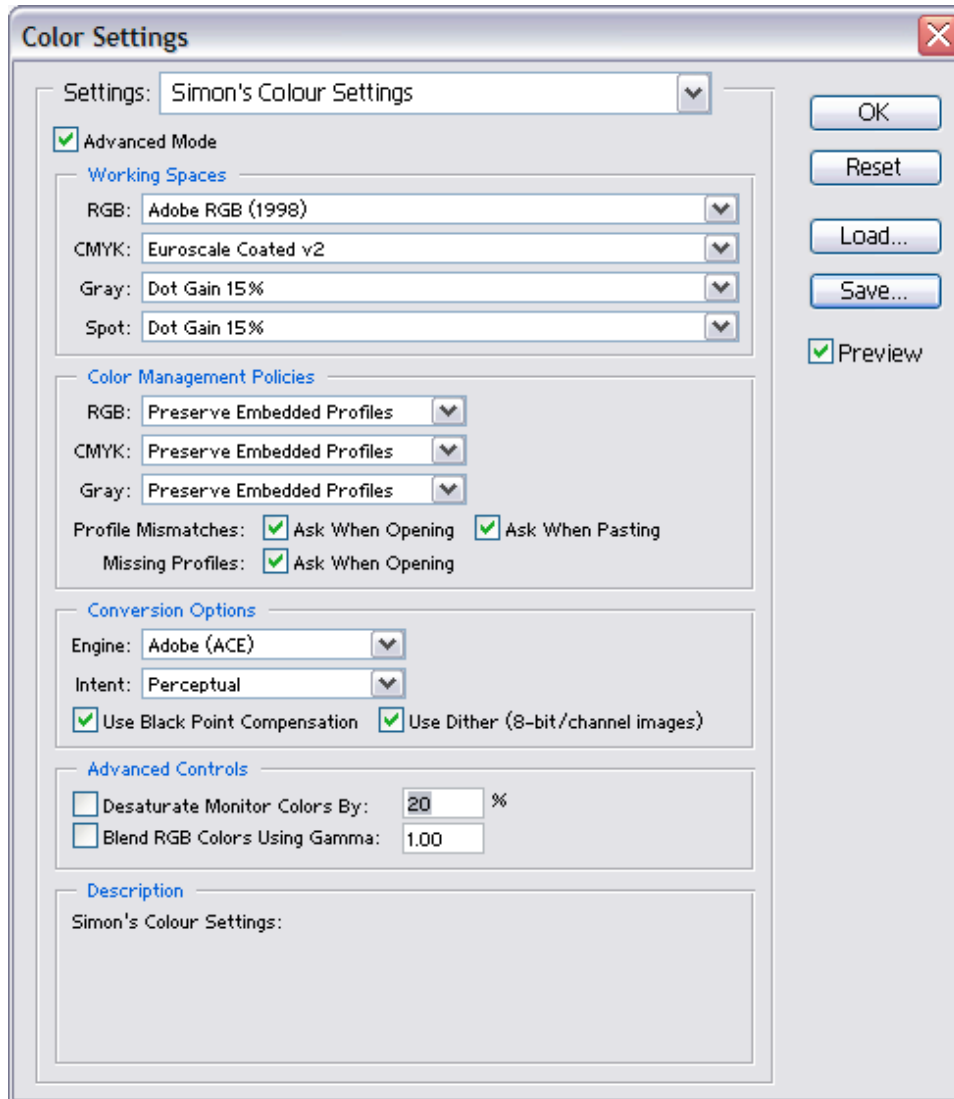
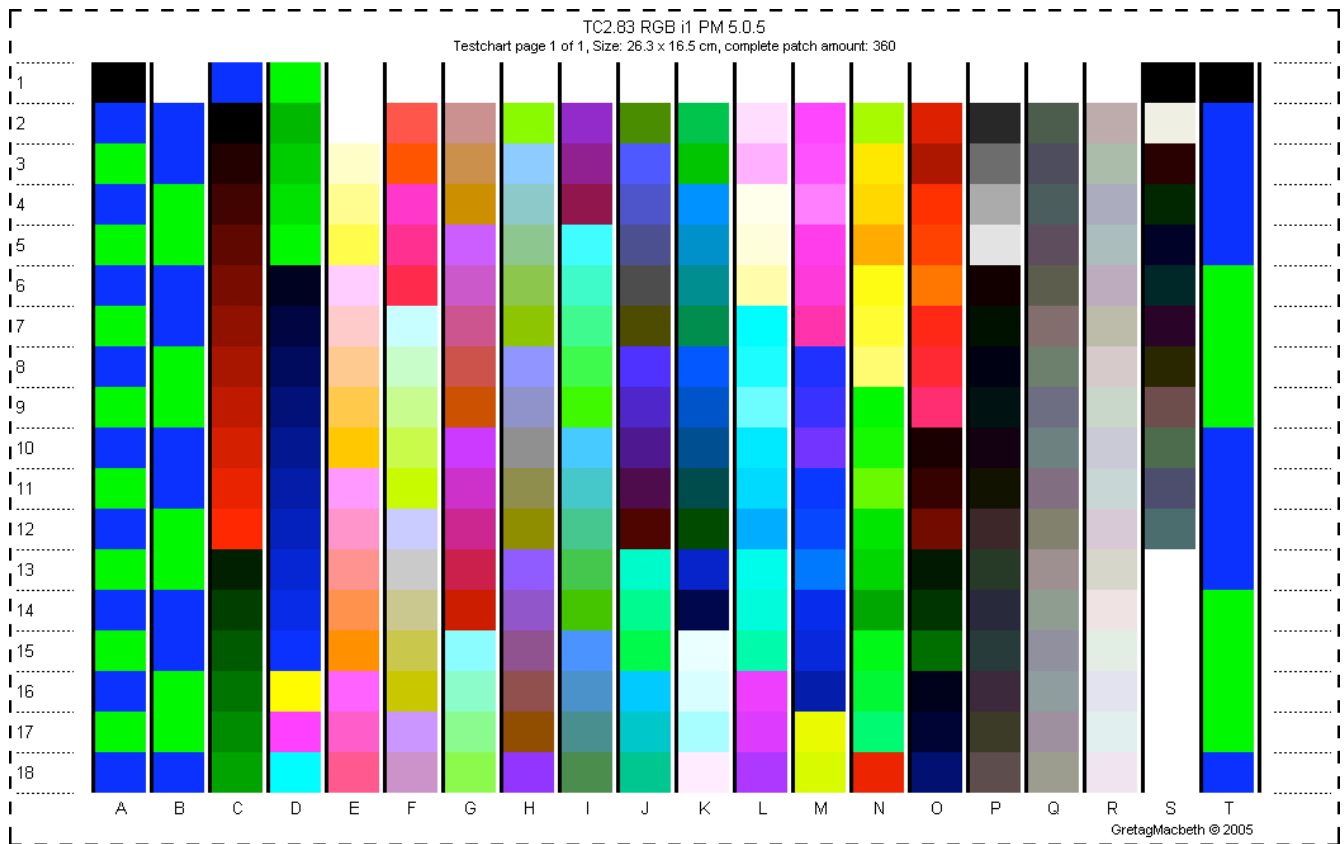
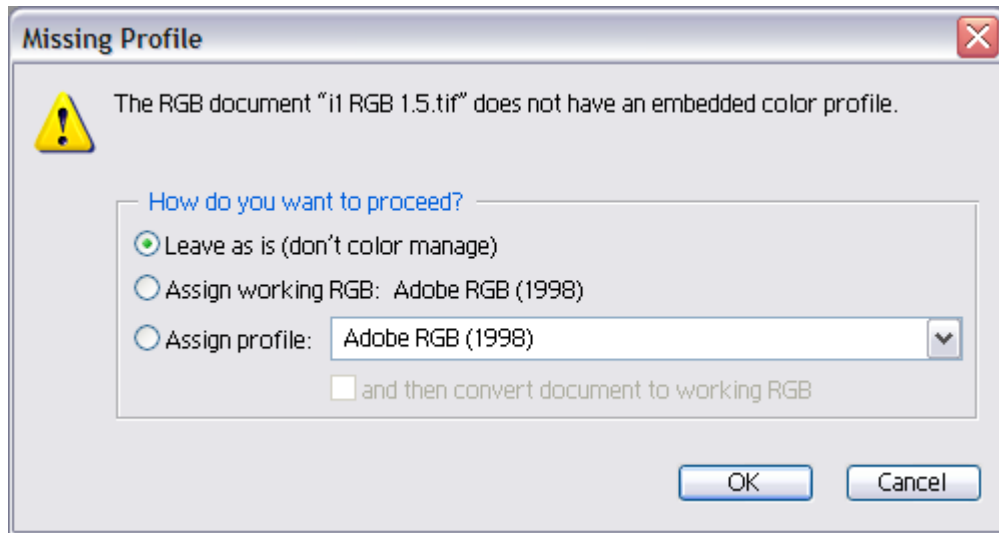


Printing (TC2.83 RGB) Test Charts from Photoshop 7, CS or CS2 with PC's using Epson 1200, 1270 or 1290 Printers.

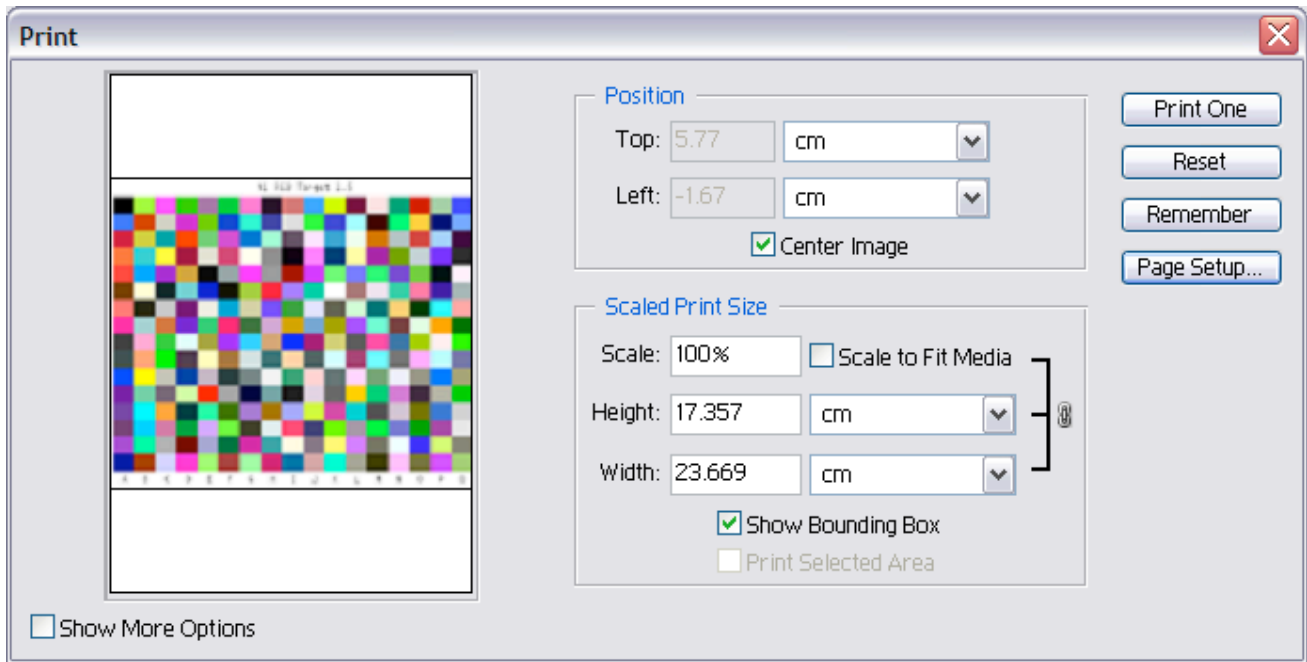
1. Open Photoshop 7, CS or CS2 and then select Edit/Color Settings.
2. Configure as shown below, then select "Save" and give a suitable name.
3. Click OK.



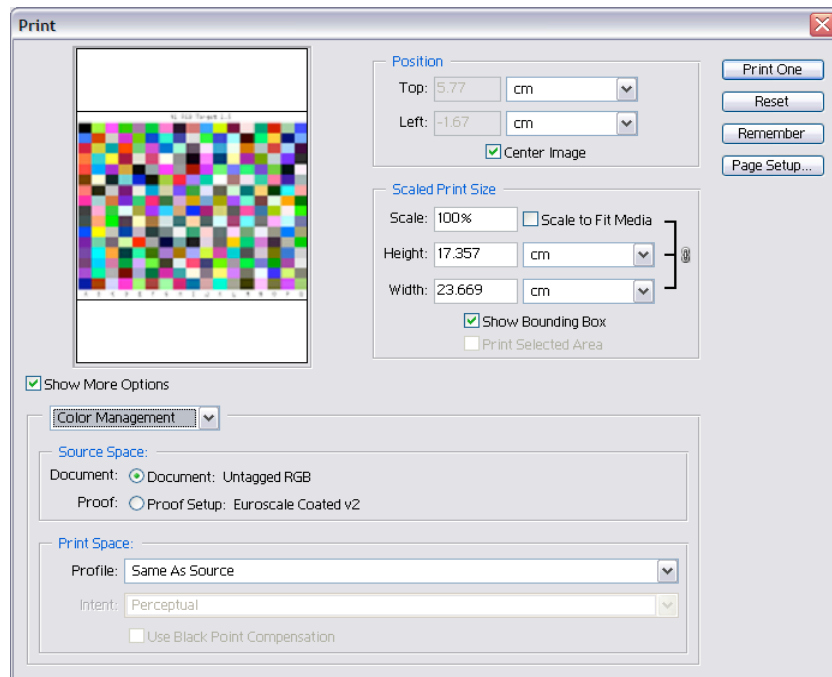
4. Open the TC2.83 RGB Test Chart you downloaded from our website.
5. When you see the window below, select "**Leave as is (don't color manage)**" this is very important.



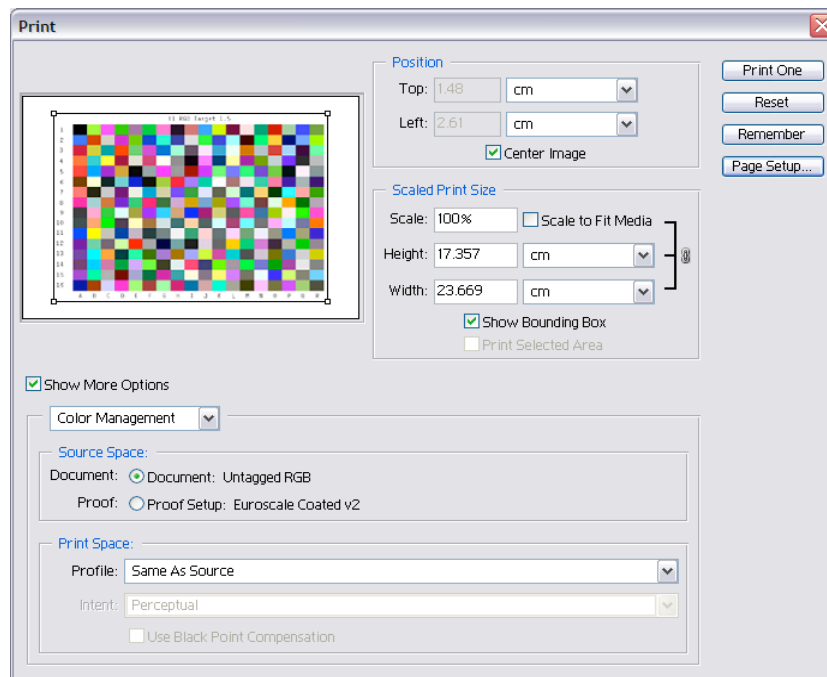
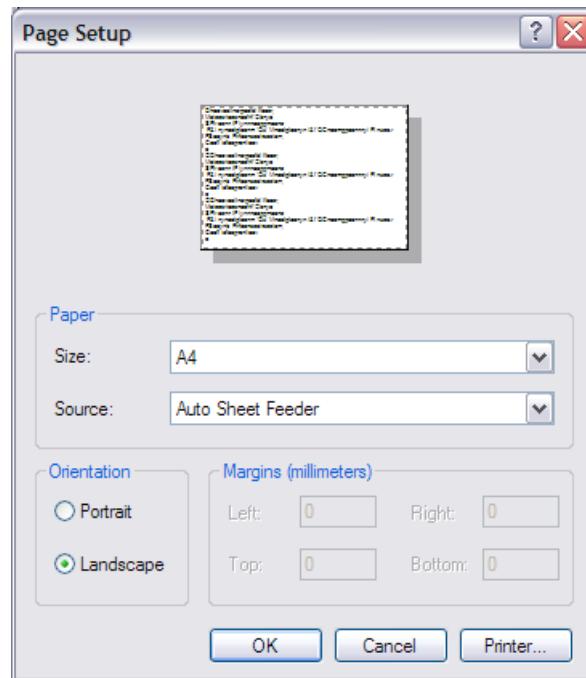
6. Go to File / Print with Preview.



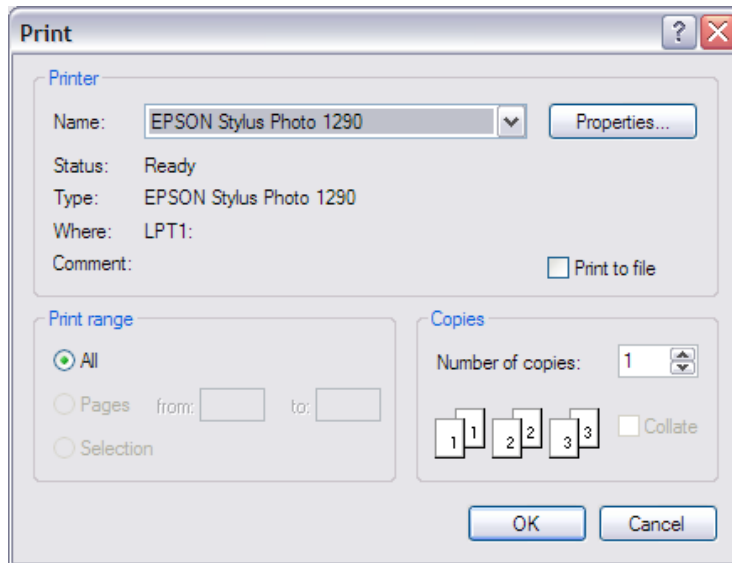
7. Tick “Show More Options” and then select “**Color Management**” as opposed to “Output”.
8. Under “Profile” select “**Same as Source**” (Photoshop 7 & CS) or set Colour Handling to “**No Colour Management**” (Photoshop CS2)



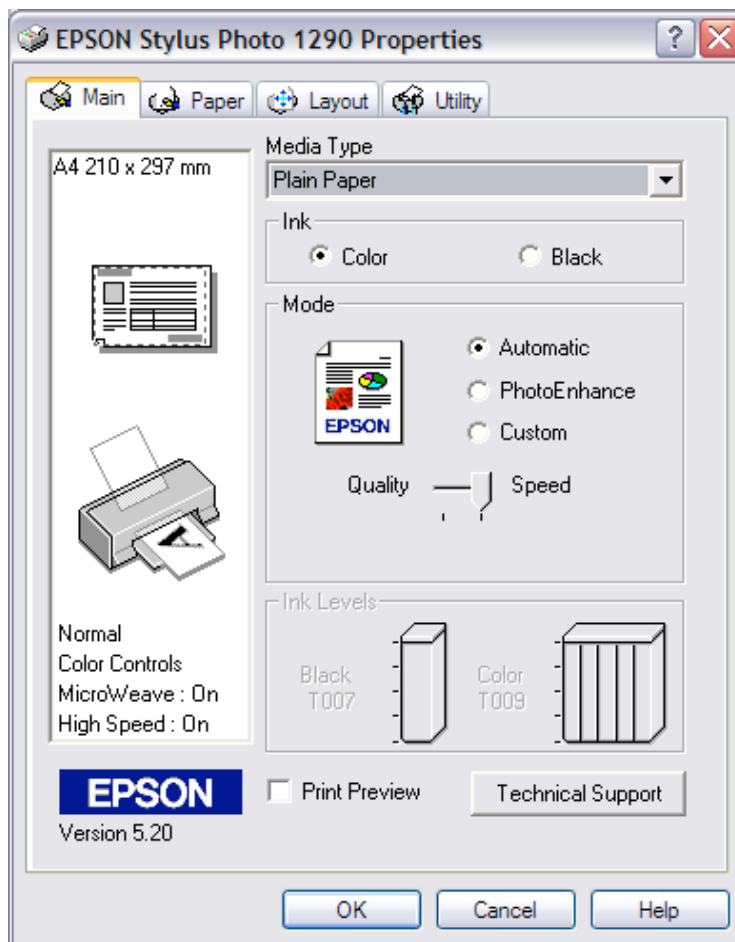
9. Click “Page Setup” and select “Landscape” and then click OK.



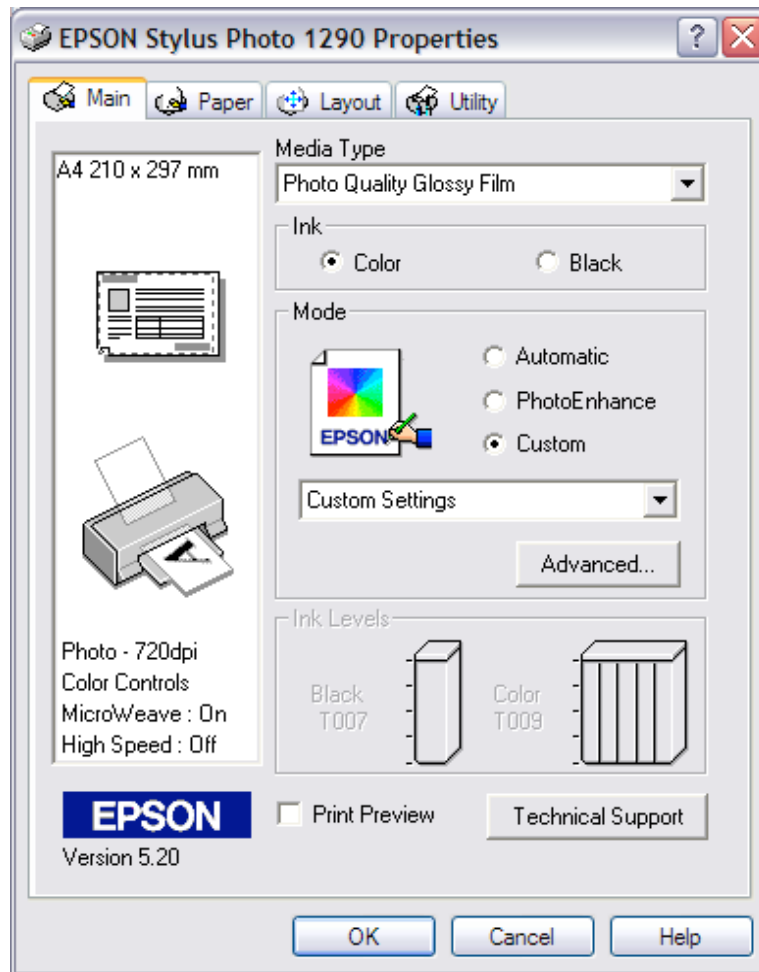
10. Click Print.



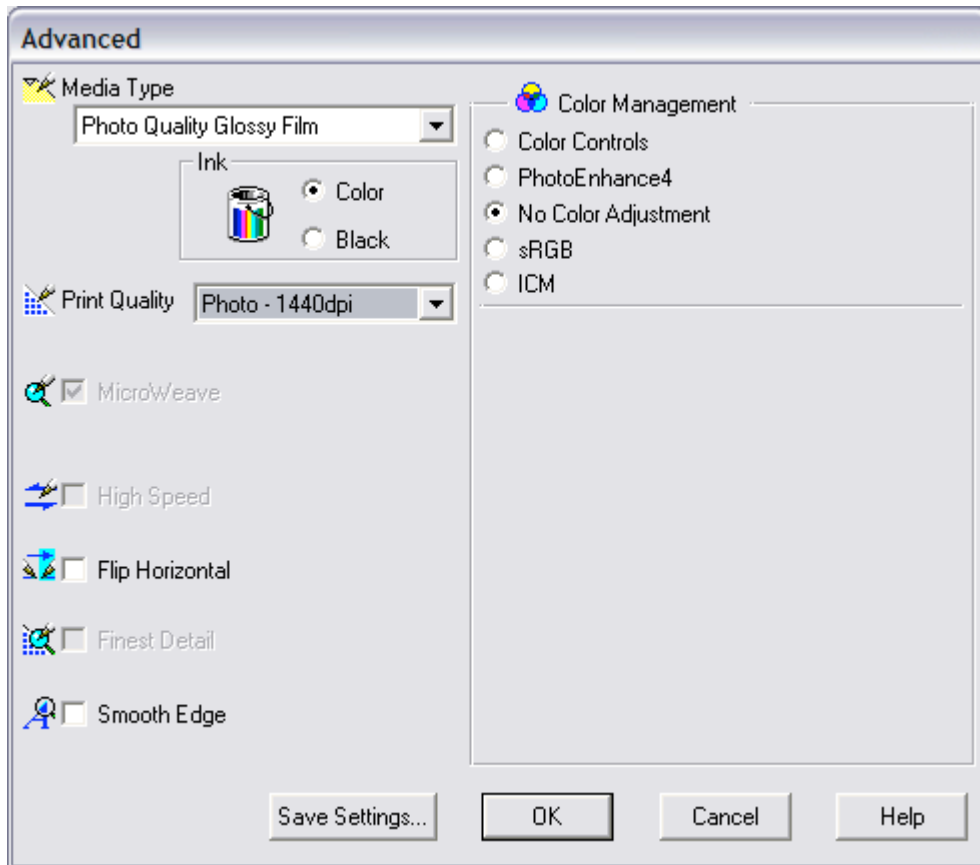
11. Select your printer from the pull down menu and then Click Properties.



12. Set the “Media” to Photo Quality Glossy Film, regardless of your paper.
13. Click “Custom”

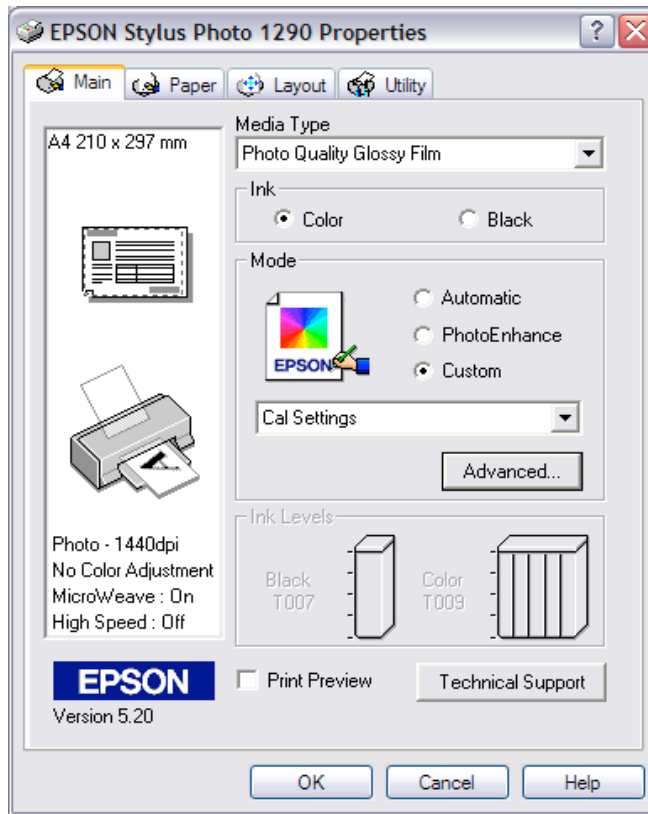


14. Click the “Advanced” button.
15. Set the “Print Quality” to “**Photo – 1440 dpi**”
16. Set “Color Management” to “**No Color Adjustment**”

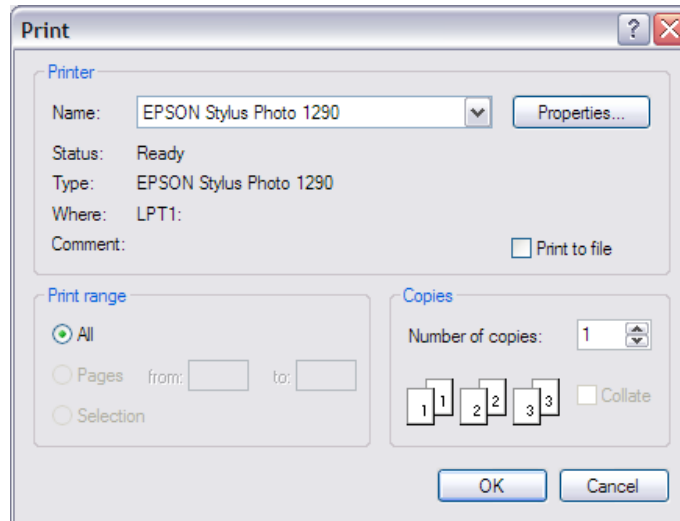


17. Select "Save Settings" and type "**Cal Settings**" and then click Save.





18. Click OK to print your Test Chart.



19. Leave the print(s) to dry for at least 4 hours before posting together with a Cheque made payable to “**Simon Clifford-Smith**”. Please use an envelop suitable for photographs.

SCS-Imaging, 31/274 Fulwood Road, Sheffield, South Yorkshire S10 3BN