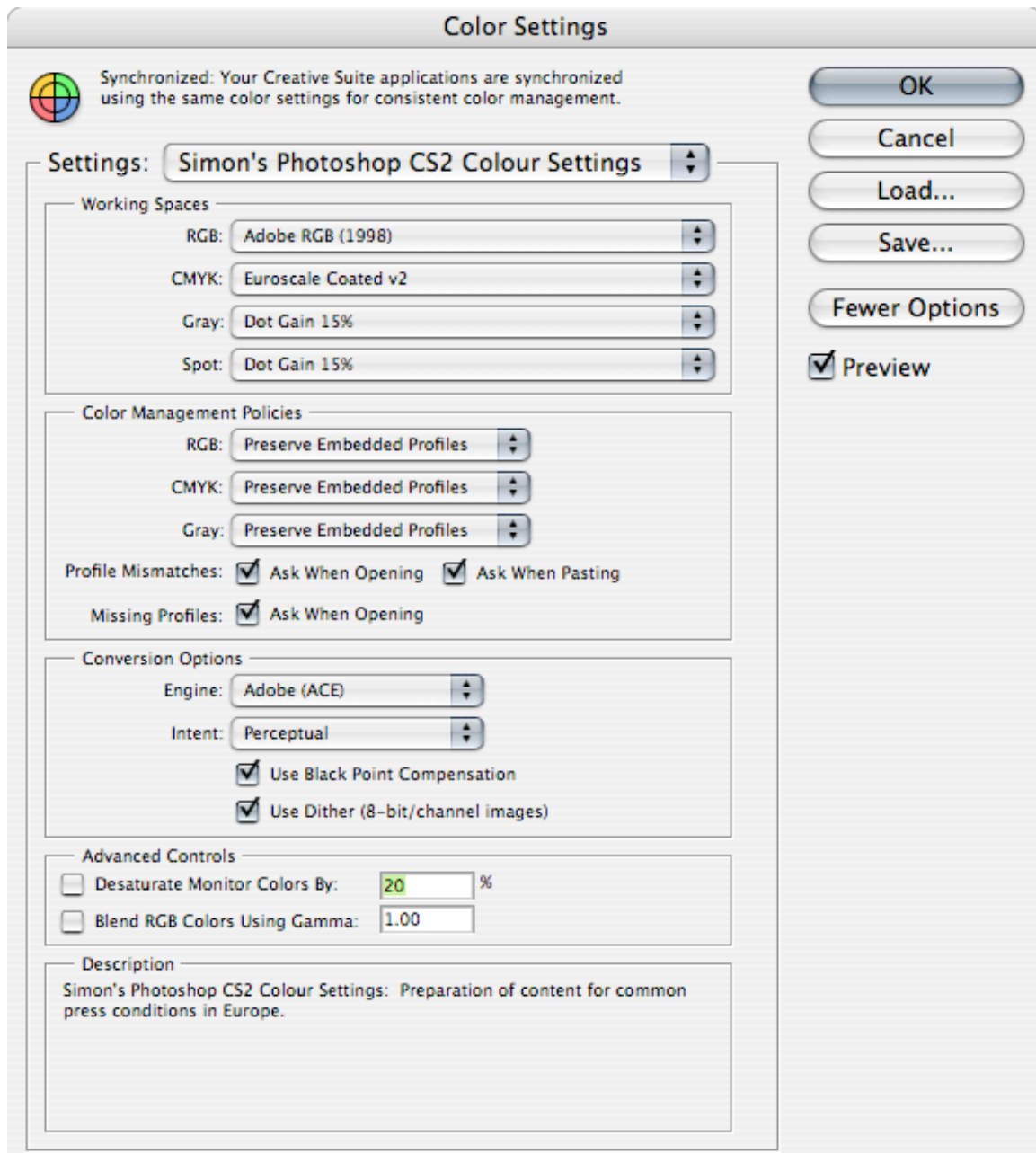
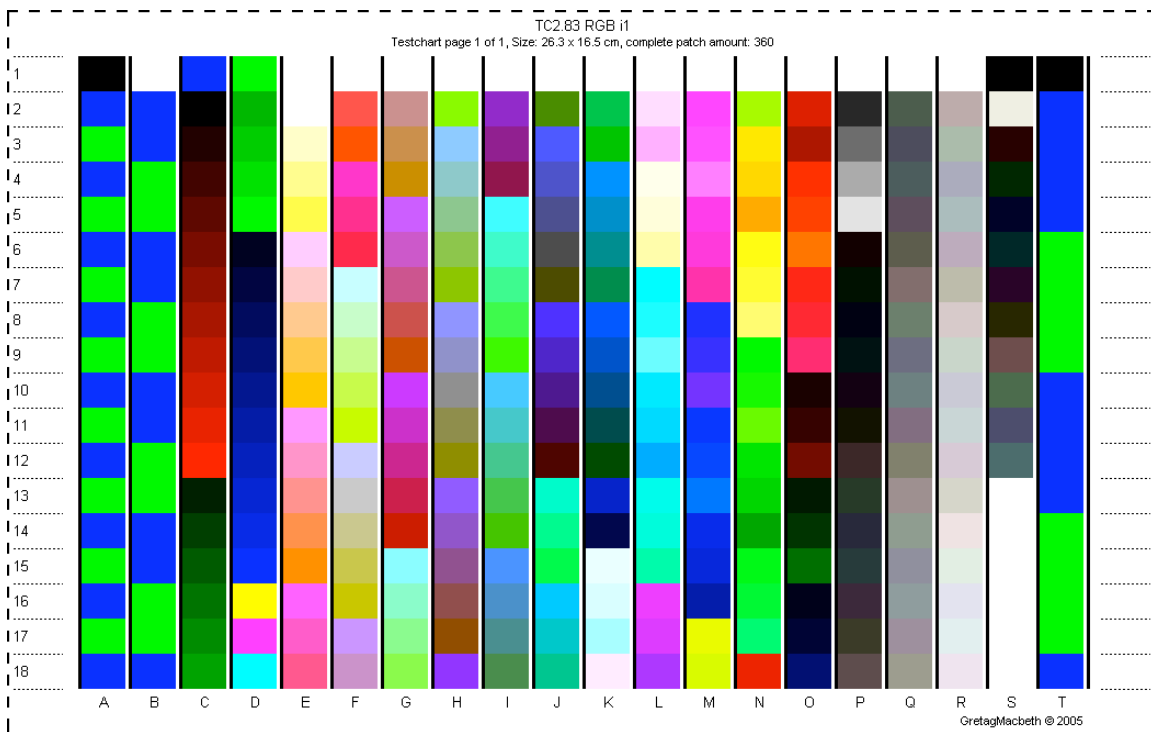
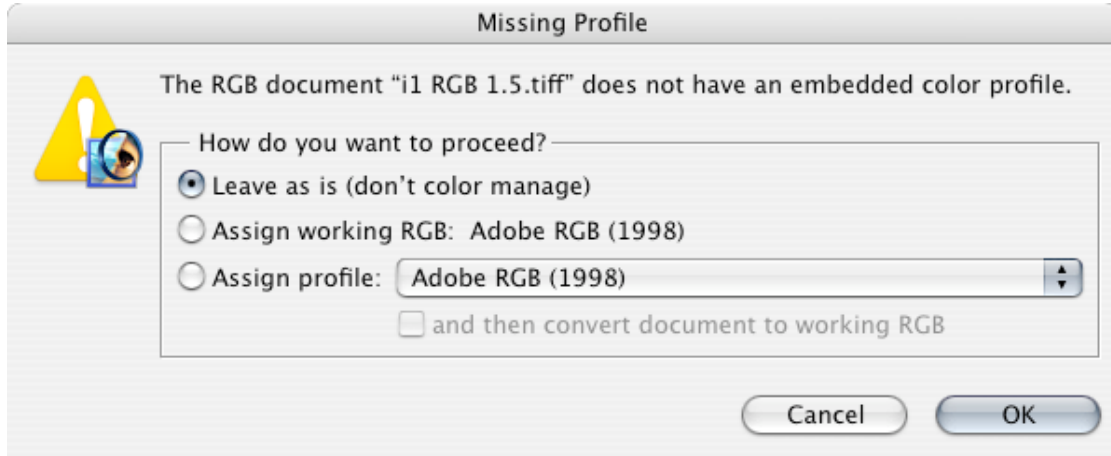


Printing Calibration Test Charts from Photoshop 7, CS or CS2 using the Epson 2100 printer with Mac OSX.

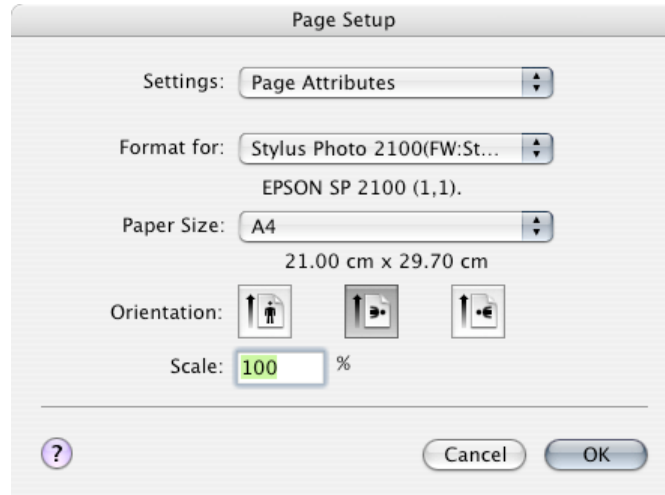
1. Open Photoshop 7, CS or CS2 and then select Preferences/Colour Settings (Photoshop 7 or CS) or Edit/Color Settings.(Photoshop CS2)
2. Configure as shown below, then select “Save” and give a suitable name.
3. Click OK.



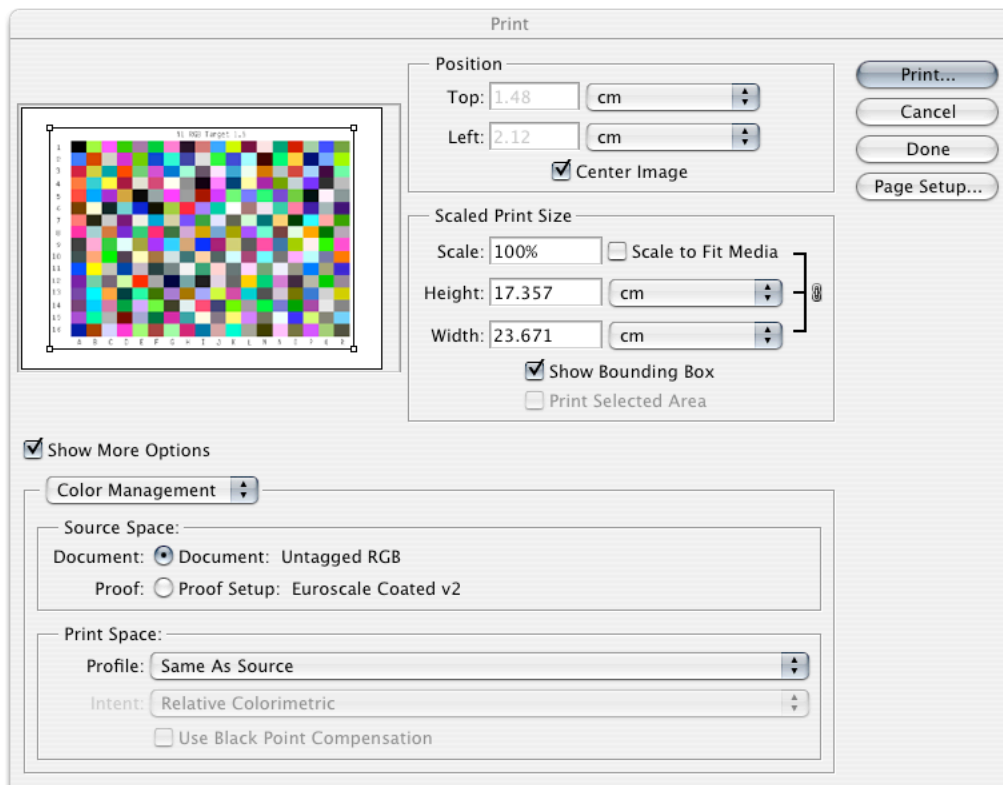
- 4. Open Calibration Chart (TC2.83 RGB) in Photoshop, and when asked select “Leave as is (don’t colour manage)” see screenshot below.



- 5. Go to File/ Print with Preview
- 6. Click “Page Setup” and then set paper size to A4 Landscape. Click OK.

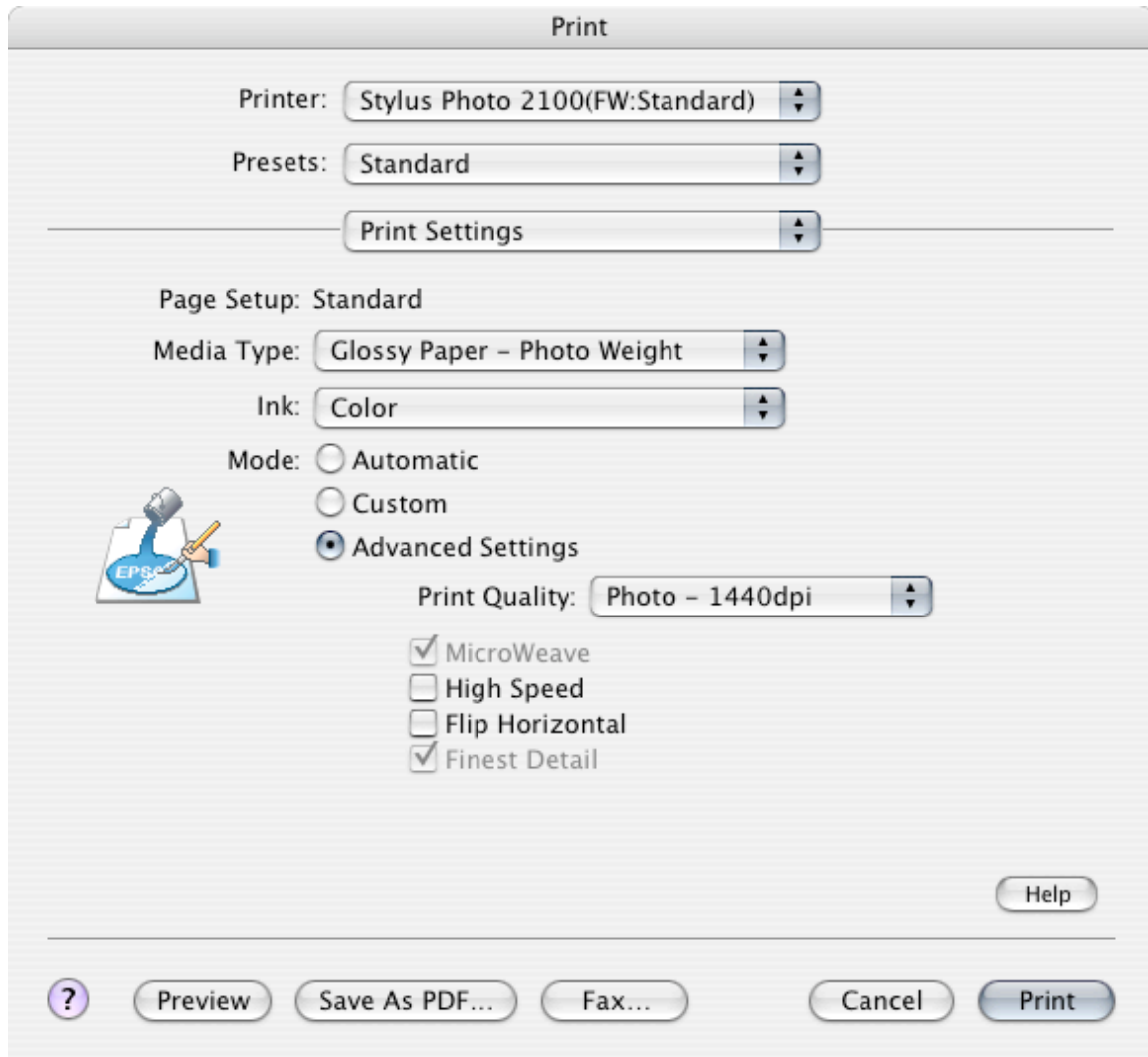


7. Tick **Show more options** (Photoshop 7 or CS) or **More Options** (Photoshop CS2) and also select “Colour Management” as opposed to “Output”
8. Set the “Profile” to **Same As Source** (Photoshop 7 or CS) or set Colour Handling to **No Colour Management** (Photoshop CS2)

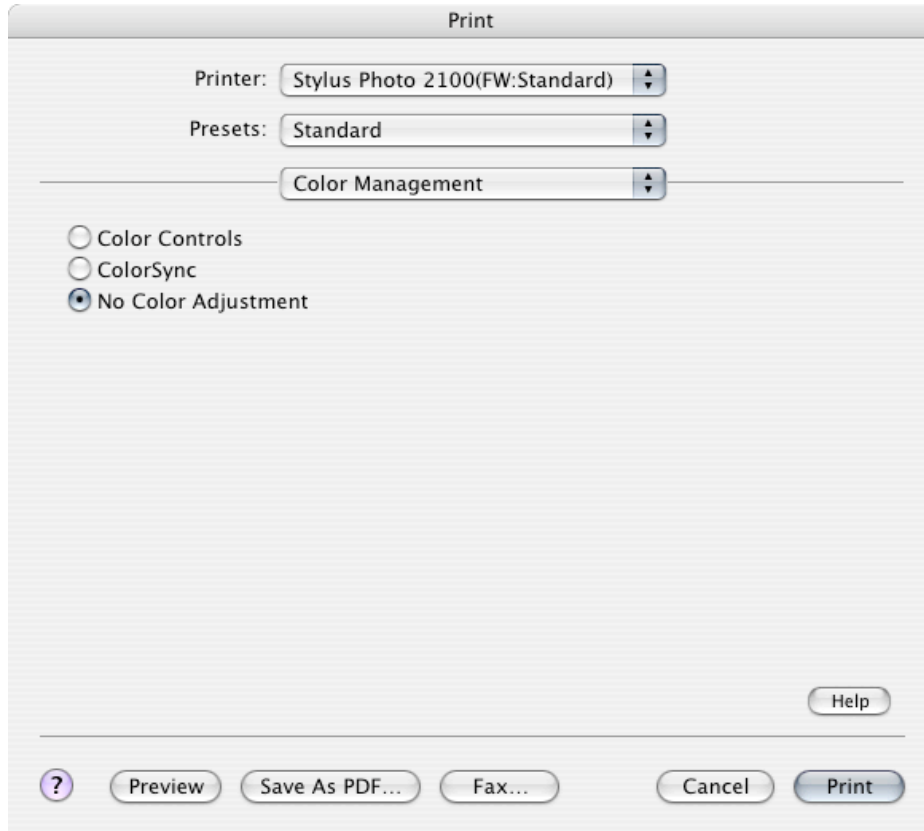


9. Click “Print” and then click “Print Settings” from the 3rd Pull Down Menu.

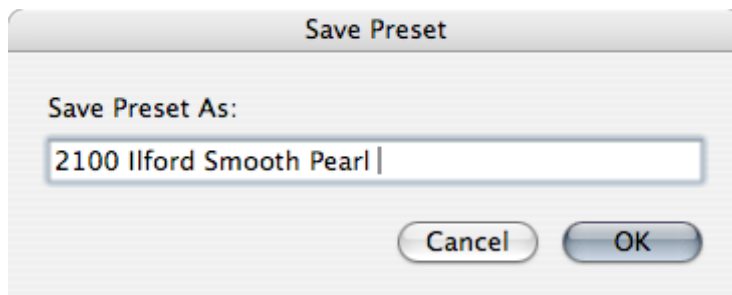
10. Set the “Media Type” to **Glossy Paper – Photo Weight**
11. Click “Advanced” and set “Print Quality” to Photo – 1440dpi”
12. Uncheck “High Speed”



13. Select “Colour Management” from the 3rd pull down menu.
14. Select “No Colour Management”



15. Click “Presets” and then select “Save As” give settings a suitable name,



16. Finally click **Print**

17. Allow print(s) to dry for at least 4 hours before posting in an envelope suitable for photographs together with a Cheque made payable to **Simon Clifford-Smith**

31/274 Fulwood Road, Sheffield, South Yorkshire, S10 3BN