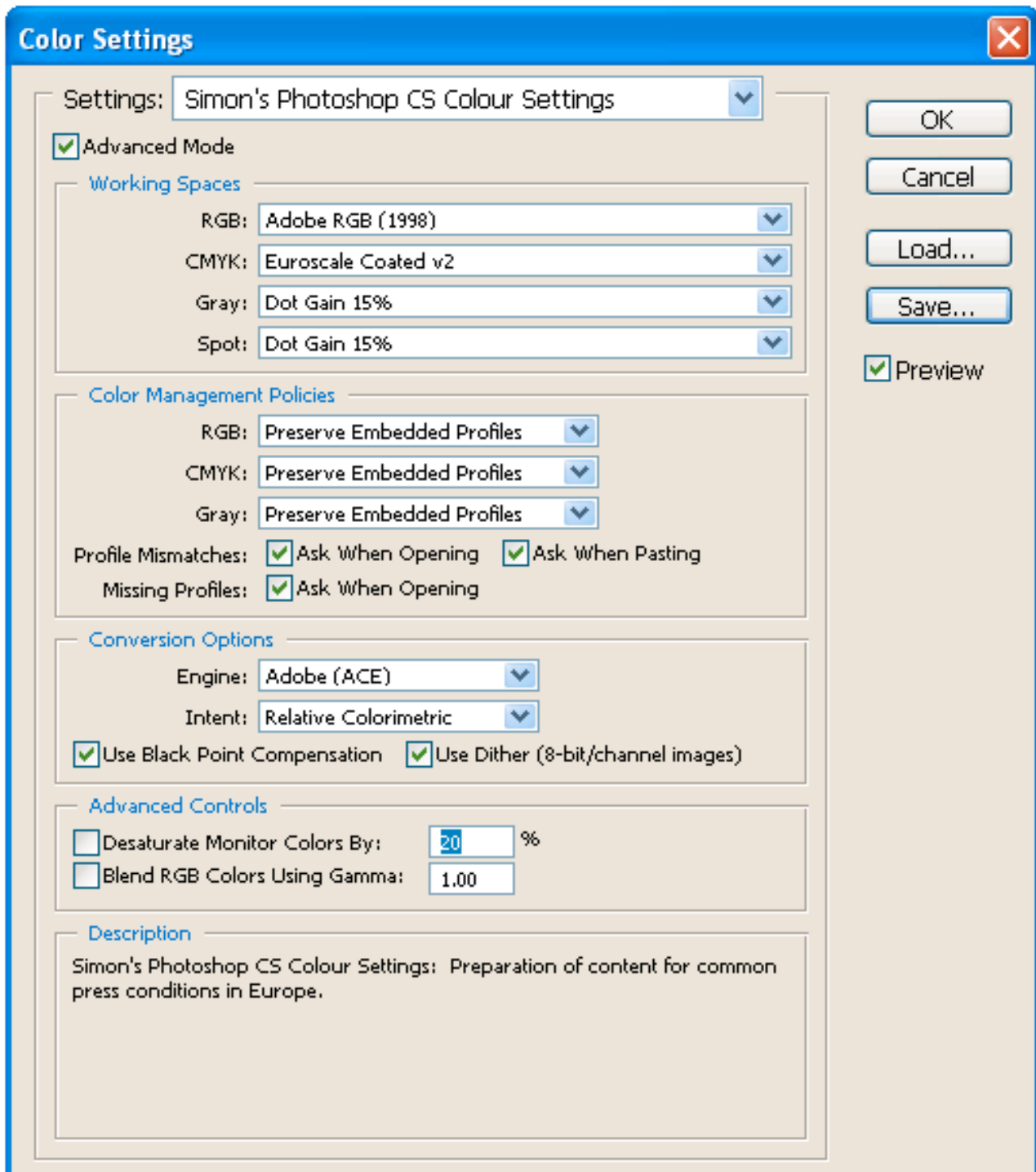
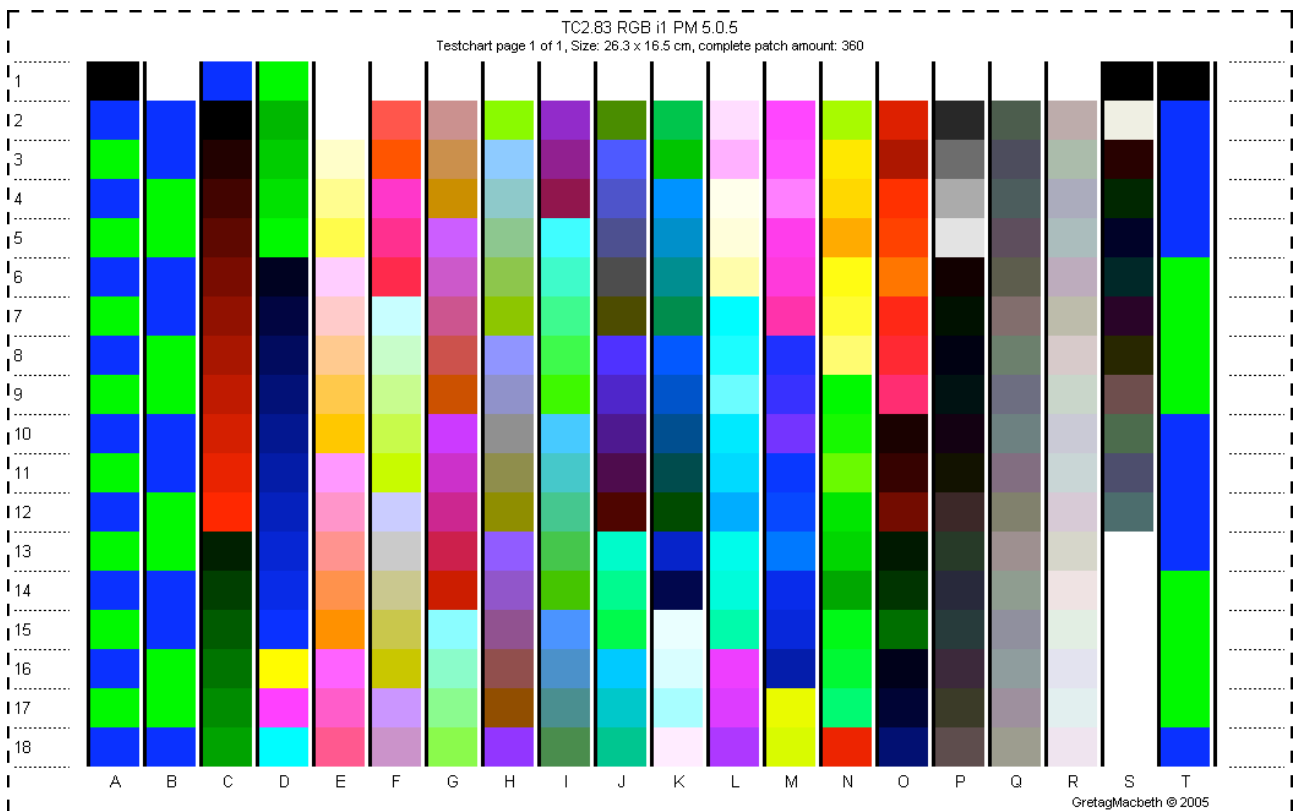
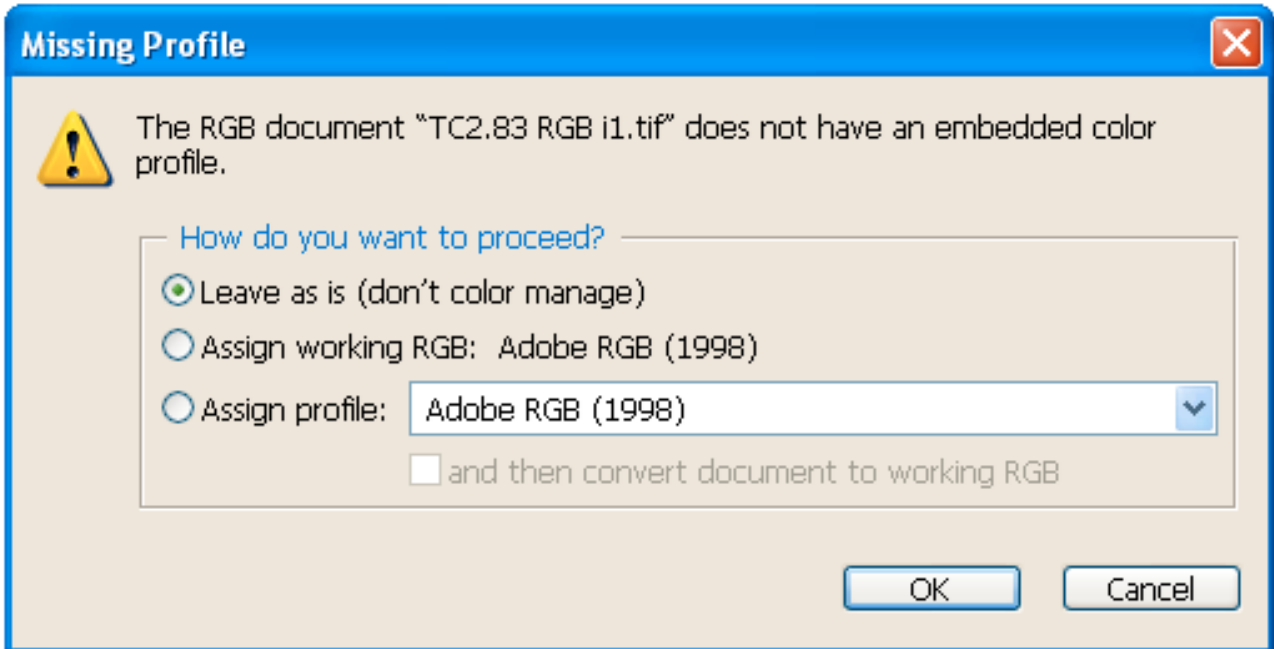


## Printing Test Charts from Photoshop 7, CS, CS2 or CS3 using Windows XP and an HP B9180 Printer

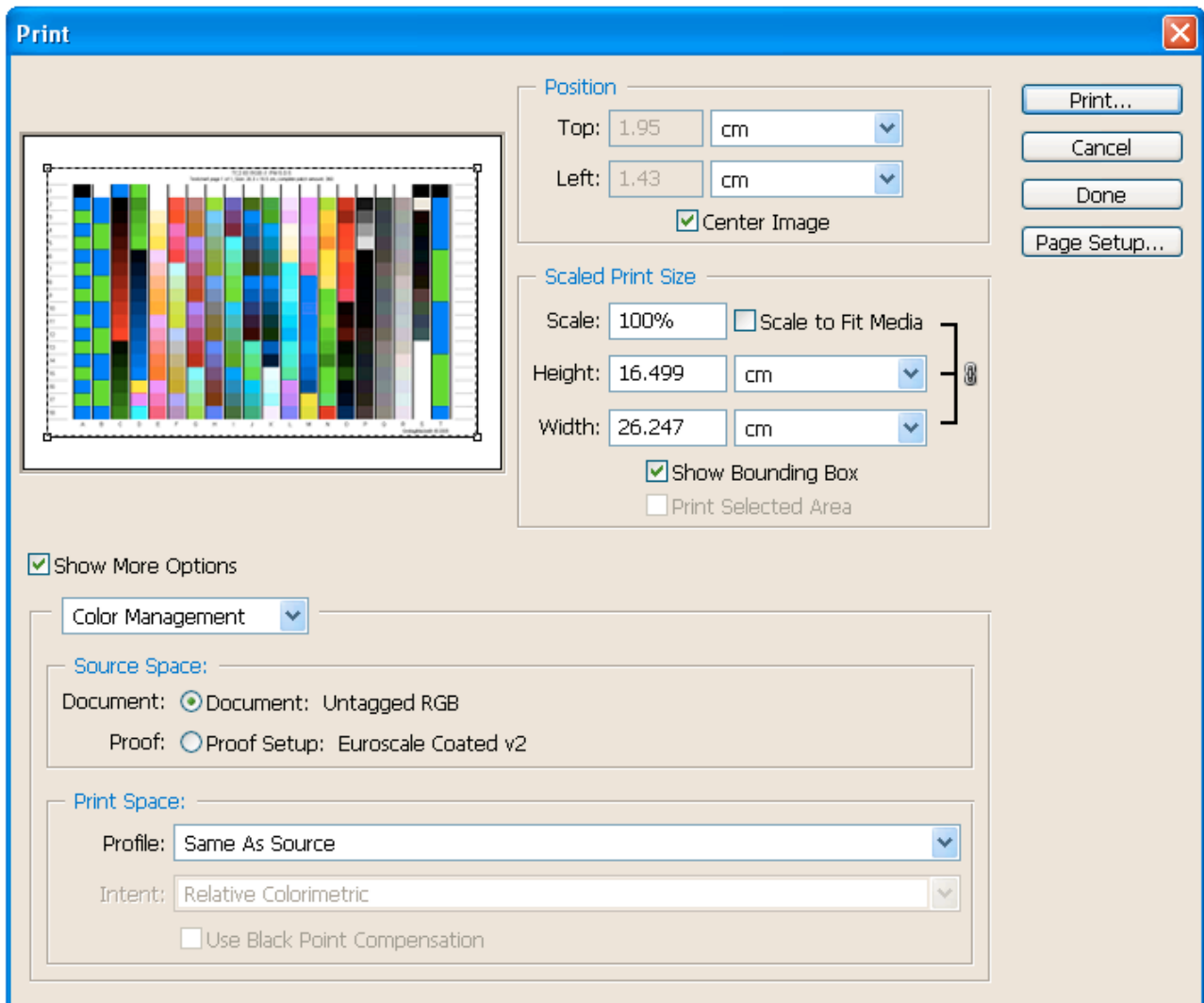
1. Open Photoshop 7, CS, CS2 or CS3
2. Click Edit/Colour Settings and then configure as shown below, then click OK.



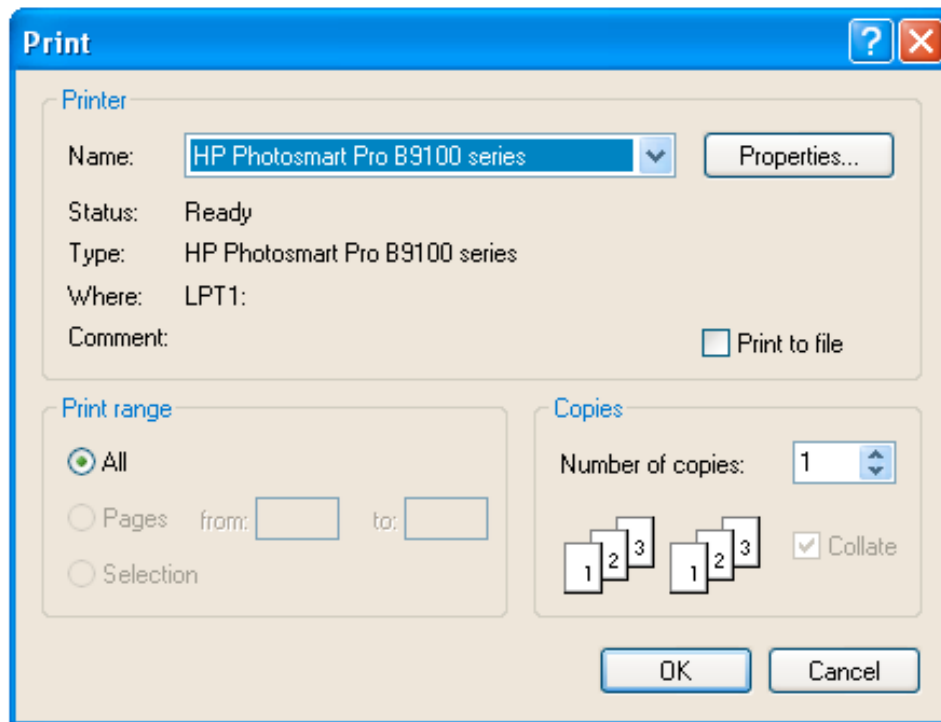
3. Open the Test Chart (TC2.83 RGB i1) you downloaded from our website.
4. When you see the Window below, select **Leave as is (don't colour manage)** this is very important.



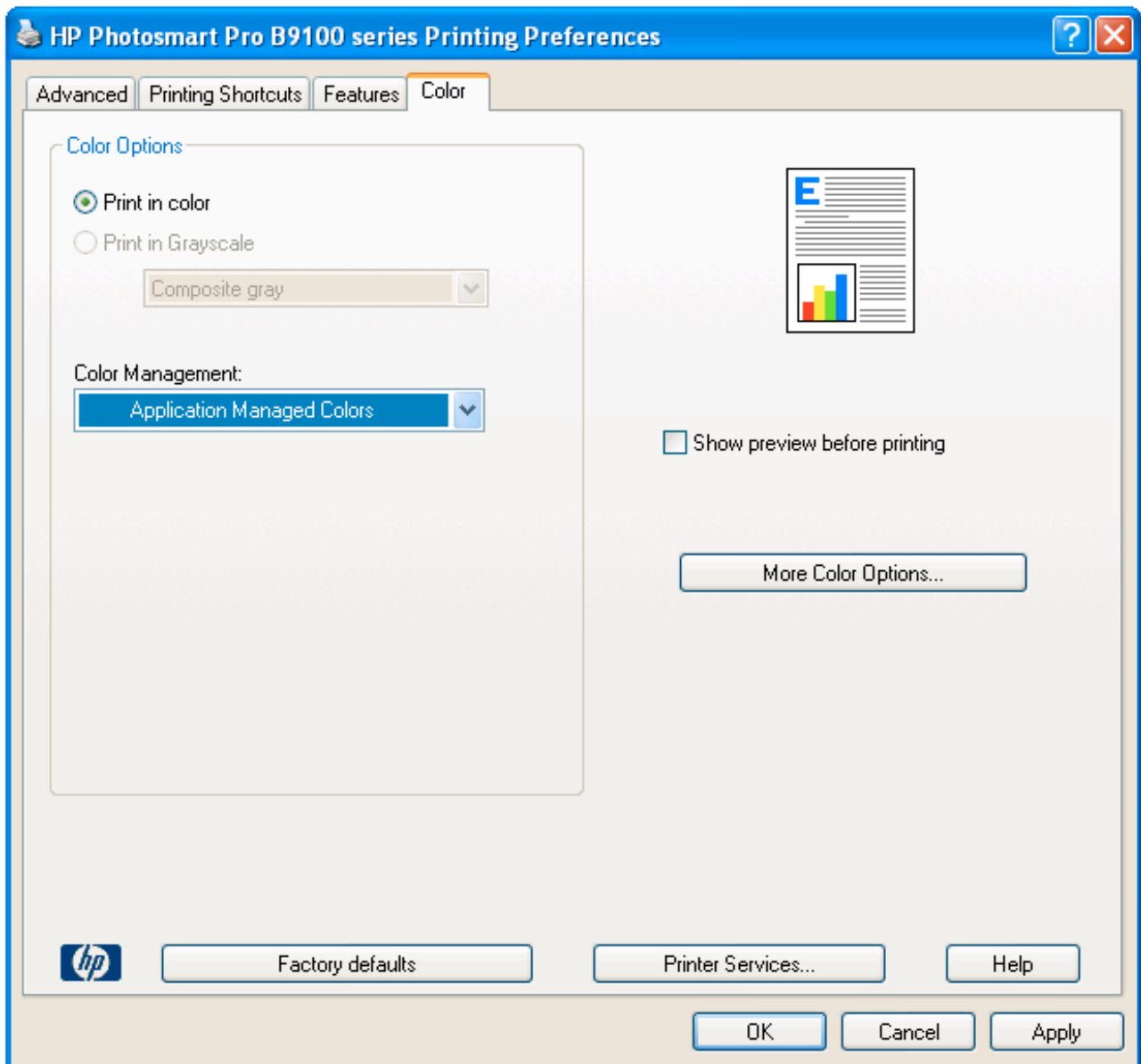
5. Click File/Print with Preview (PS 7, CS & CS2) or File/Print (PS CS3)



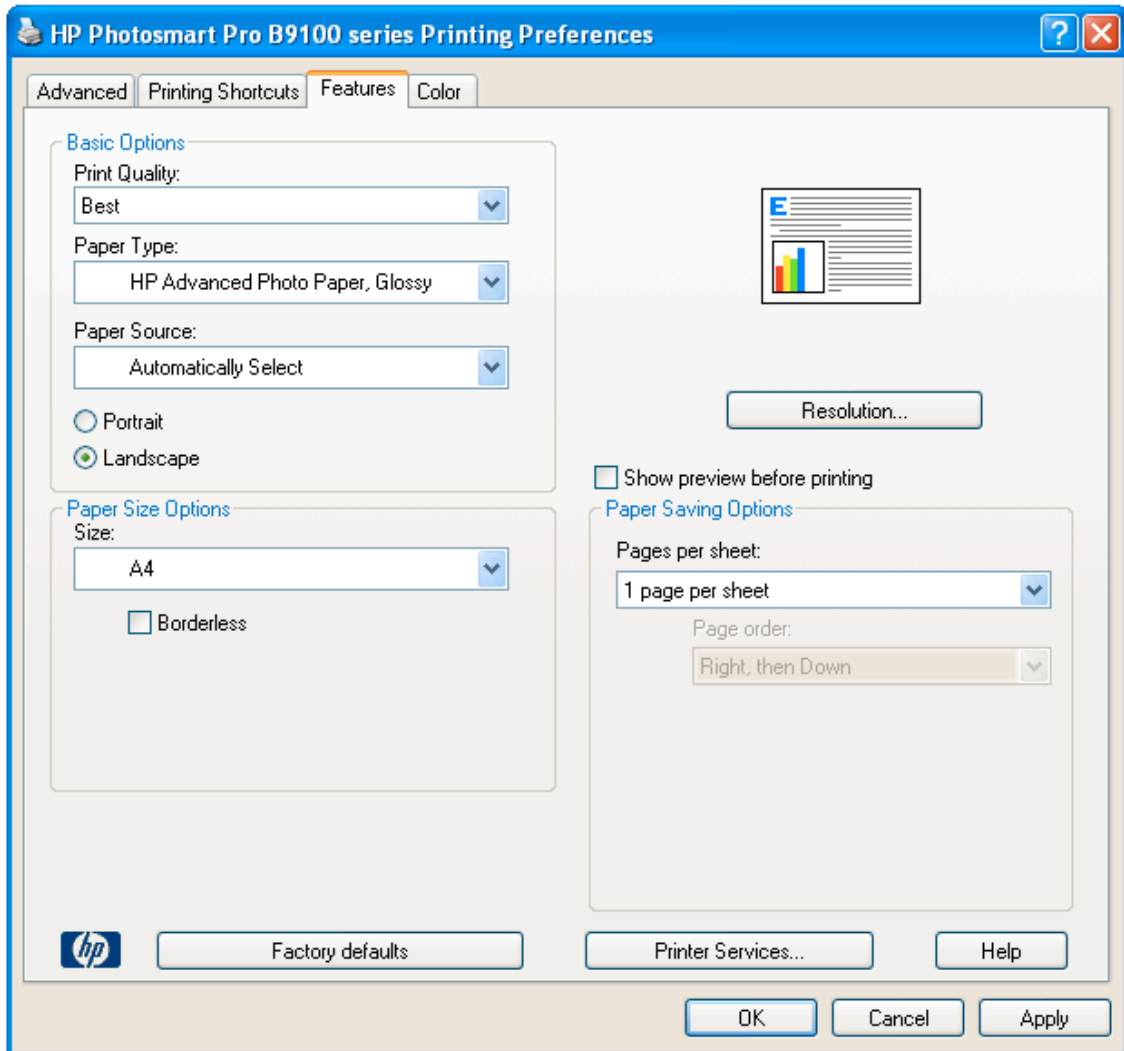
6. Click **Show More Options**, & select **Colour Management** as opposed to “Output”
7. Under “Print Space” set the “Profile” to **Same As Source** (PS 7, CS & CS2) or **No Colour Management** (PS CS3)
8. Click “Page Setup” and set paper size to A4 Landscape, then click OK.
9. Click Print.



1. Select printer if necessary and then click “Properties”



2. Click the “Colour” Tab
3. Set “Colour Management” to **Application Managed Colours** (Very important)
4. Click the “Features Tab”



1. Select a Paper Type that best describes the paper you want profiling and then write your selection on the edge of your printed chart together with the paper make & name, so we can provide you with accurate printing instructions.
2. Set “Print Quality” to **Best**.
3. Click OK and then click OK again to Print.
4. Leave the Print to dry for at least 4 hours before posting in an envelop suitable for photographs together with a cheque made out to “**Simon Clifford-Smith**”
5. Please ensure we have your e-mail address, as we will send your profile, Printing Instructions and Receipt via e-mail.
6. Please post to: -  
SCS-IMAGING, 37 Osborne Mews, Sheffield, South Yorkshire, S11 9EG