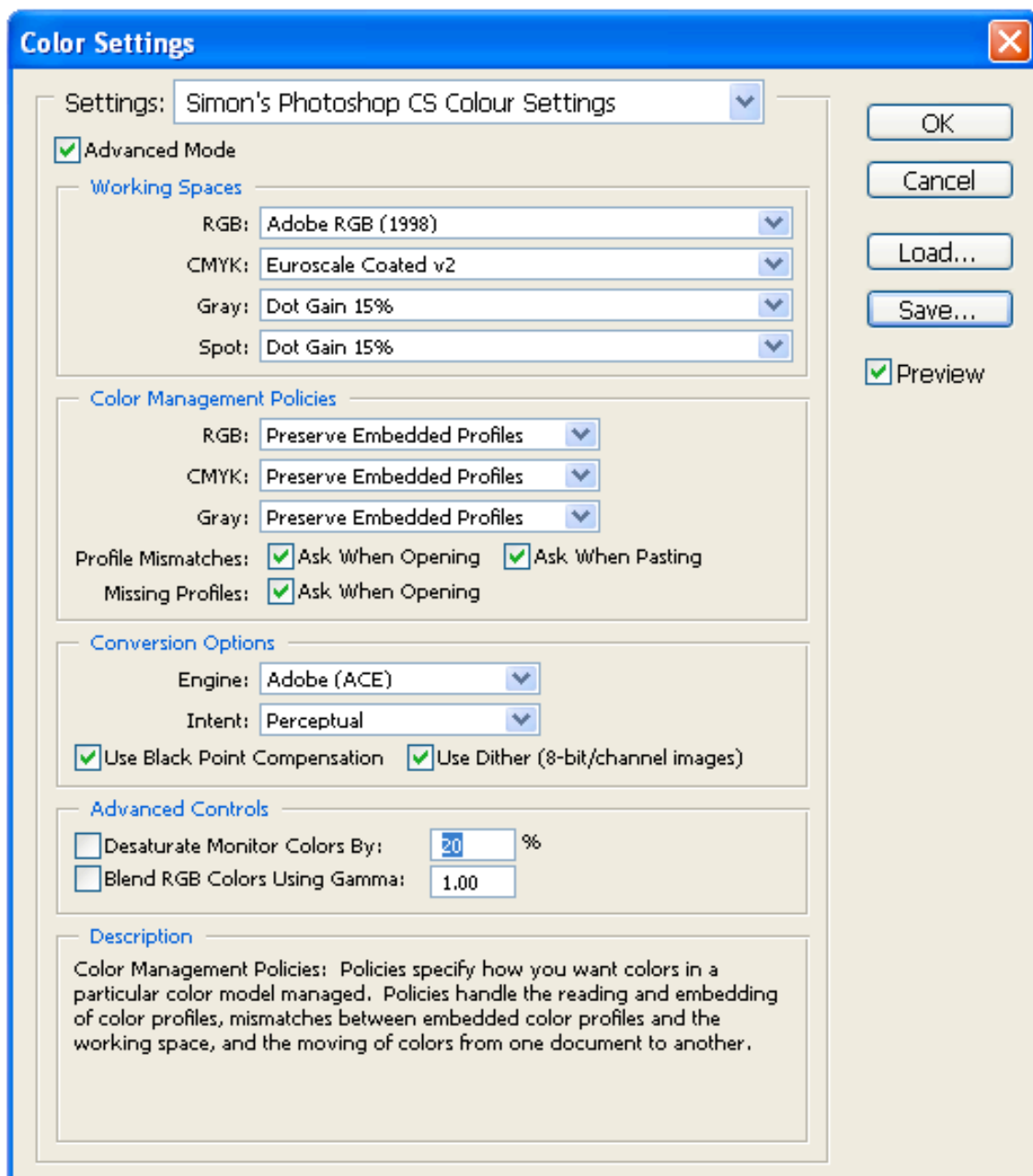


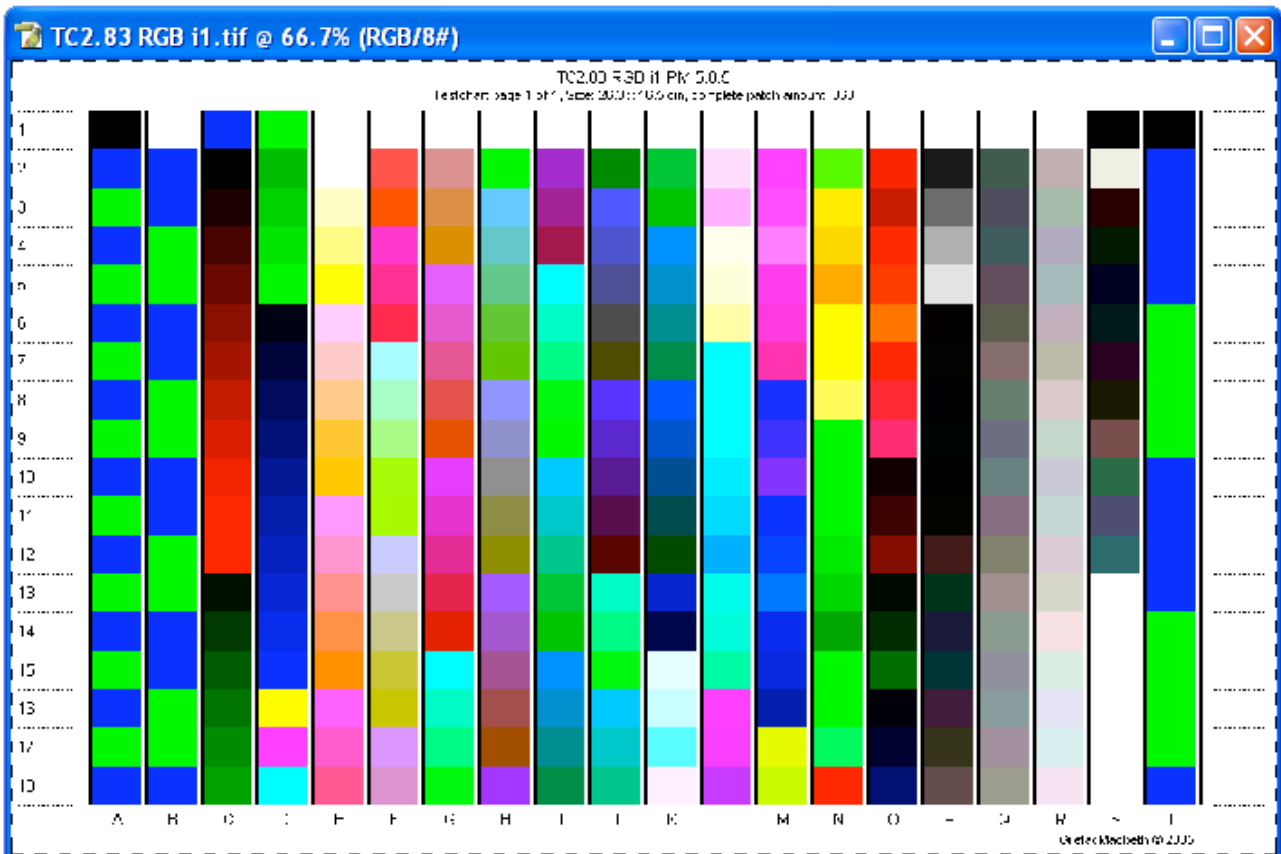
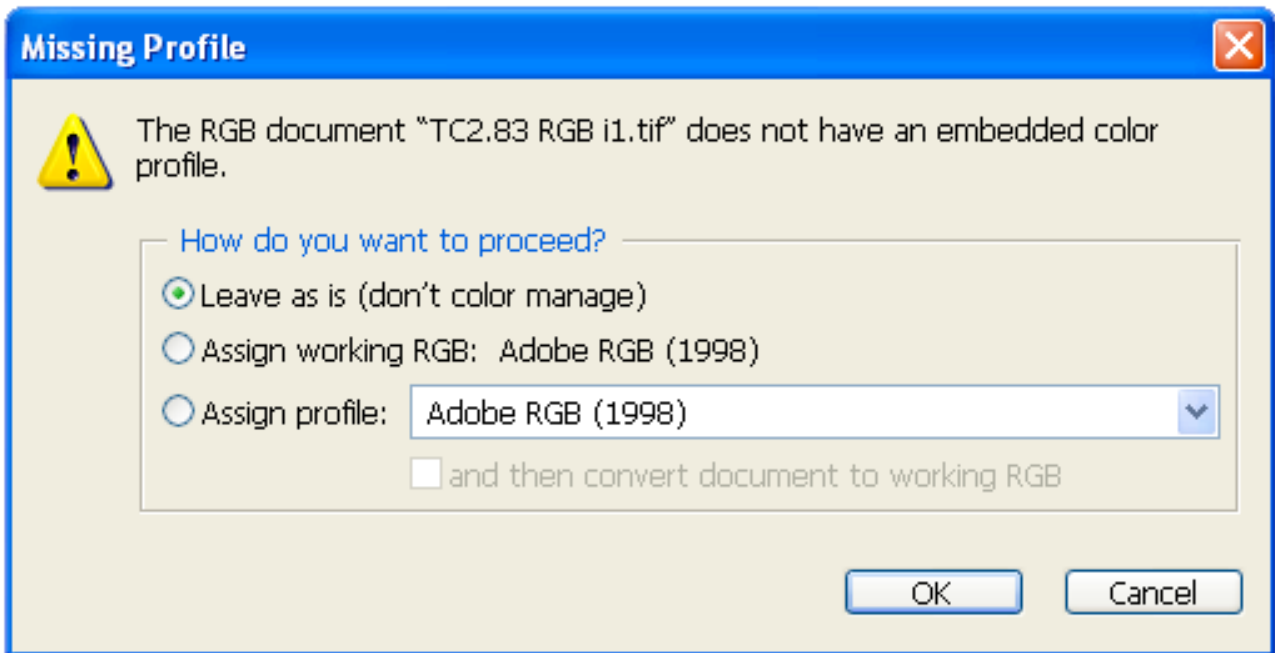
Printing (TC2.83 RGB i1) Test Chart from Photoshop 7, CS, CS2 or CS3 with PC's using the Epson 1400 Printer.

1. Open Photoshop and then select Edit/Colour Settings.
2. Configure as shown below, then select Save and give a suitable name.
3. Click OK.

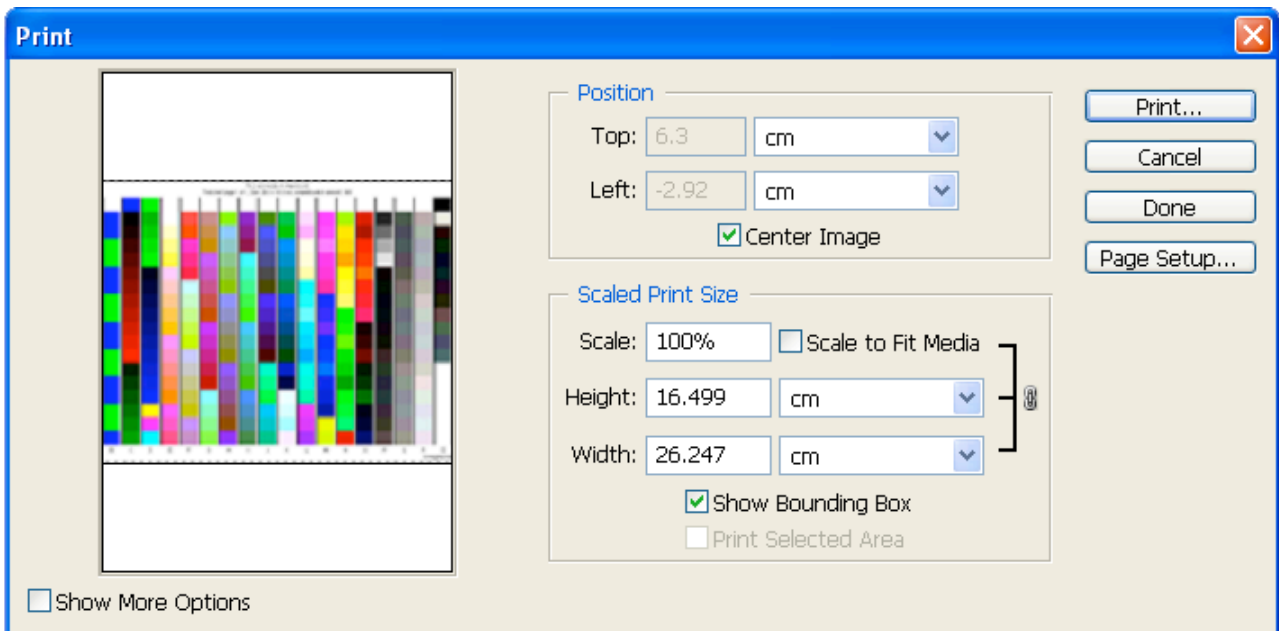


4. Open the (TC2.83 RGB i1) Test Chart you Downloaded from our Website.

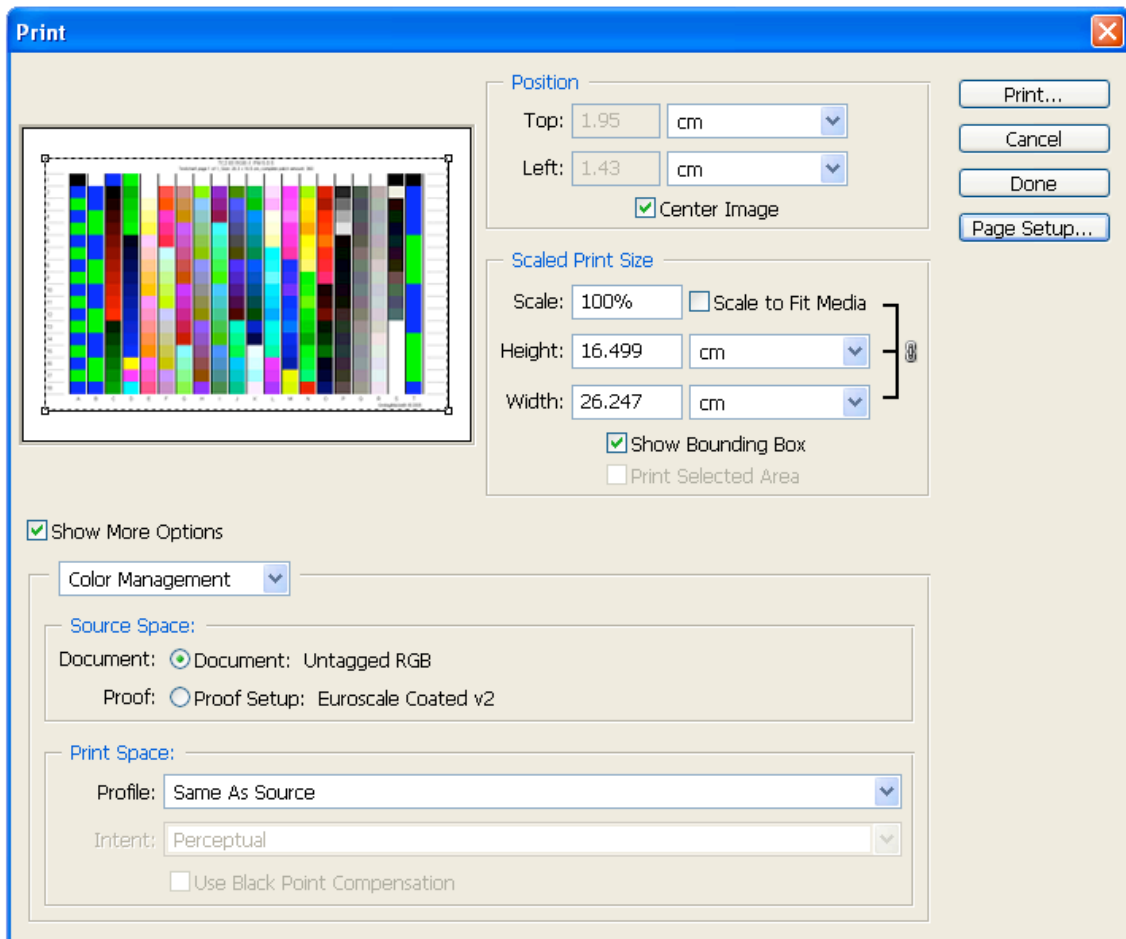
5. When you see the Window below, select **Leave as is (don't colour manage)** this is very important.



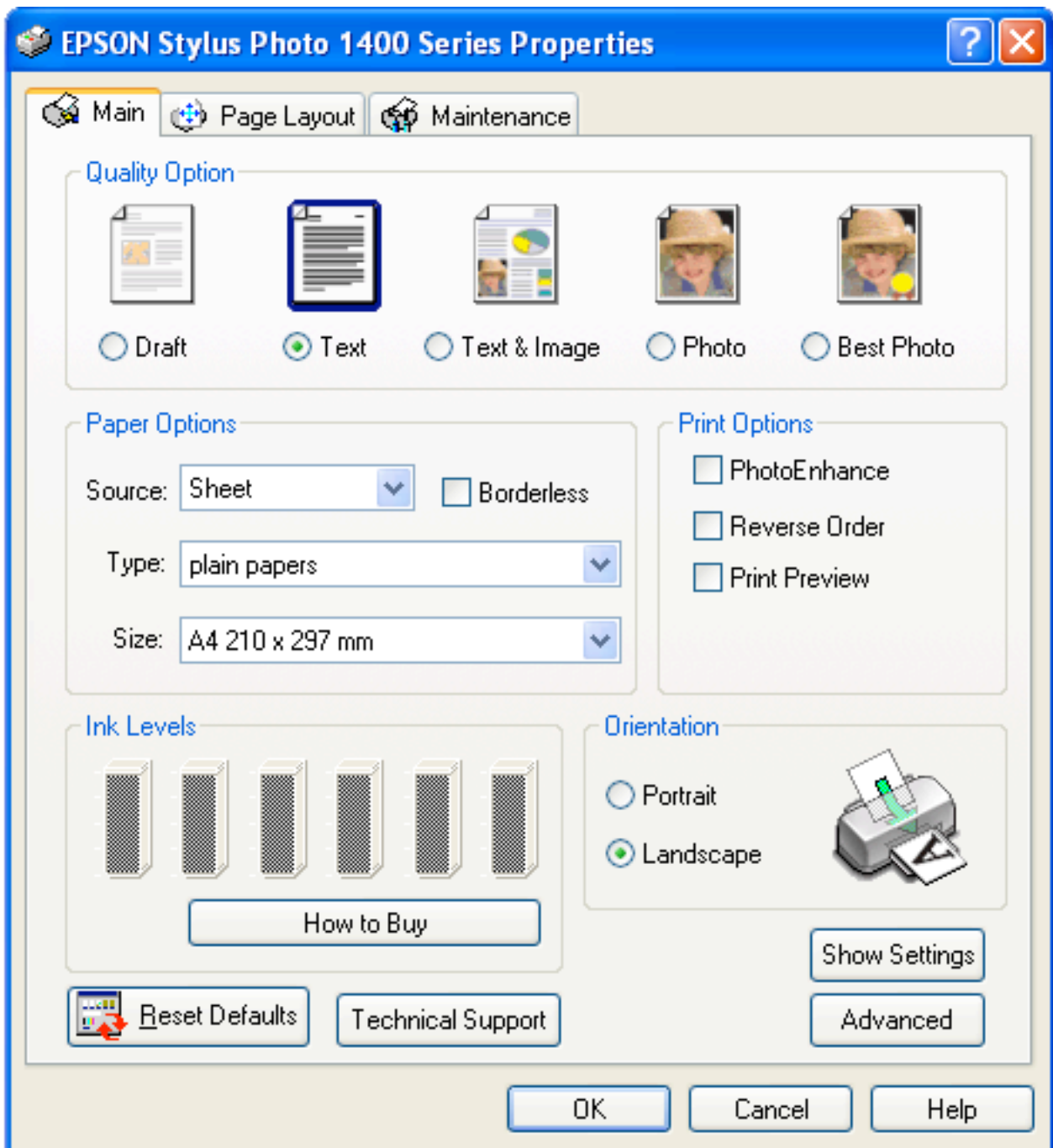
6. Go to File/Print with Preview



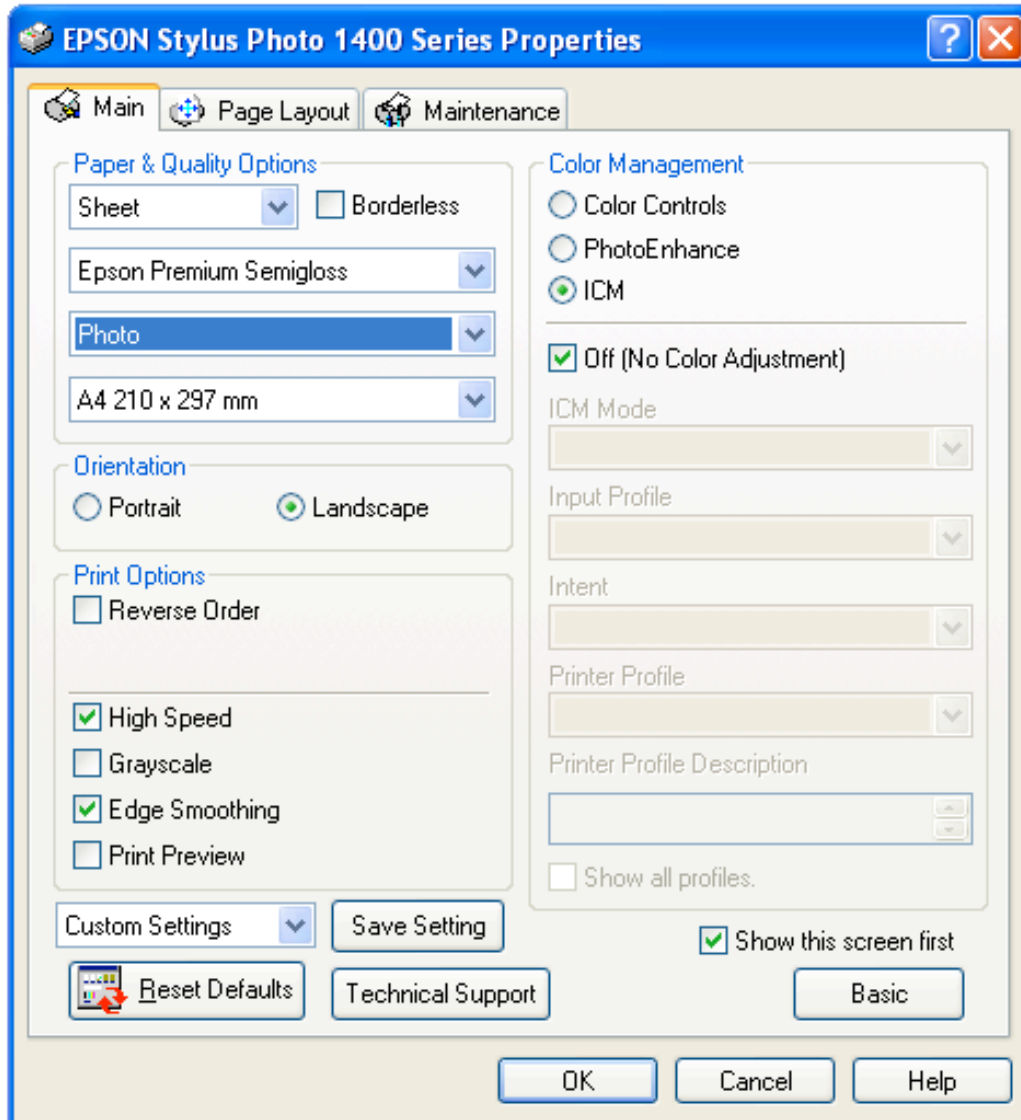
7. Tick **Show More Options** (Photoshop 7 or CS) or **More Options** (Photoshop CS2)
8. Select **Colour Management** as opposed to **Output**.



9. Under Profile select **Same as Source** (Photoshop 7 or CS) or set Colour Handling to **No Colour Management** (Photoshop CS2 & CS3)
10. Select Page Setup and select **A4 Landscape**, then click OK.
11. Click Print, select your printer from the list and then click Properties.



12. Click the **Advanced** Button.



13. Tick **Show this screen first**, select **ICM** and then Tick **Off (No Colour Adjustment)**
14. Choose a media that best matches the paper you want us to profile.
15. Select either Photo or Photo RPM. (Please let us know what you selected).
16. Click OK and OK again to Print the Test Chart.
17. Leave the Print to Dry for at least 4 hours before posting to: -
SCS-IMAGING, 37 Osborne Mews, Sheffield, South Yorkshire S11 9EG
together with a Cheque made payable to **Simon Clifford-Smith**
18. Please let us have your e-mail address as we send your Profile, Printing Instructions and receipt by e-mail.